

Type E roof exhaust vents

WDQ-E**Description**

The type E roof exhaust vents are installed in air exhaust ventilation systems as air exhaust termination units.

The product features an inner water drain.

The flange is made of P30 sheet angles.

Inside the vent, there is a drip tray for removing rain and melt water. The exhaust vent is closed with galvanized steel wire mesh.

The maximum dimensions of the roof exhaust are up to 1500x1500 mm.

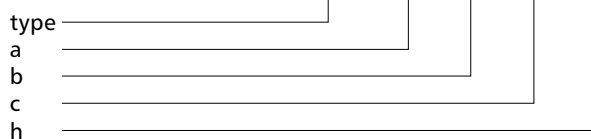
Made of galvanized steel sheet

The minimum size of the sides: 200x200 mm

The maximum size of the sides: 1500x1500

No possibility of making from acid-resistant sheet metal**Product code example**

Product code: **WDQ-E - 300 - 300 - 700 - 720**

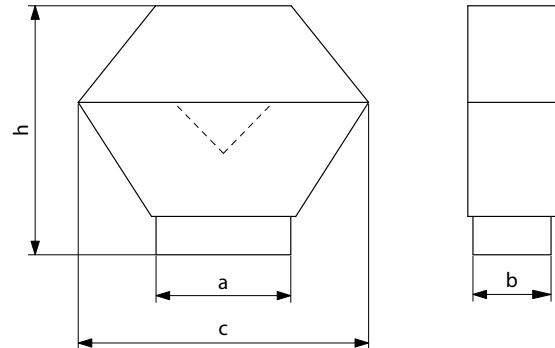


Product code examples for standard sizes:

WDQ-E-a-b **WDQ-E-300-300**

Medium-pressure version:

WDQ-E-a-b-S **WDQ-E-300-300-S**

Dimensions

<i>a x b</i> [mm]	<i>c</i> [mm]	<i>h</i> [mm]
250x250	600	660
300x300	700	720
400x400	900	890
500x500	1100	1060
600x600	1300	1200
800x800	1700	1540
1000x1000	2100	1880
1200x1200	2500	2220
1300x1300	2780	2520
1400x1400	2980	2520
1500x1500	3180	2520

The standard version (up to 1500x1500) ensures compatibility with other ventilation products, such as roof cubs, hood bases, air intake and exhaust hoods. Not all products can be manufactured with bigger dimensions.