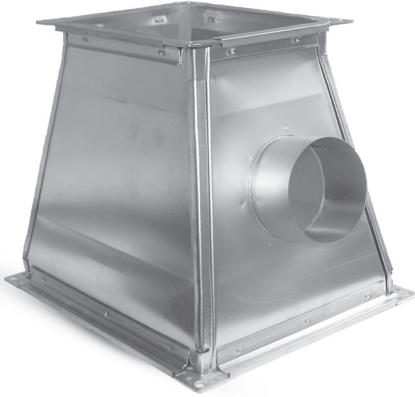
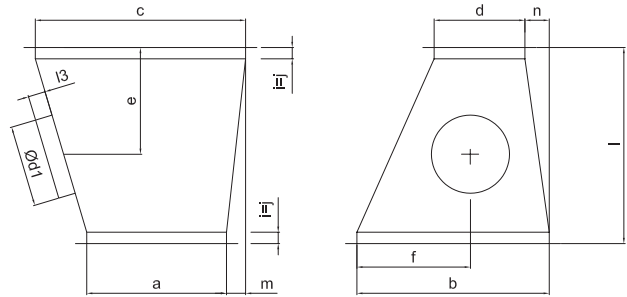


# Concentric reducing T-pieces

## TR9



### Dimensions



### Description

The concentric reducing T-piece ends are fitted with sheet angles, and the entire fitting is braced by cross-wise ribbing. The round take-off connector is male and located symmetrically in the side wall.

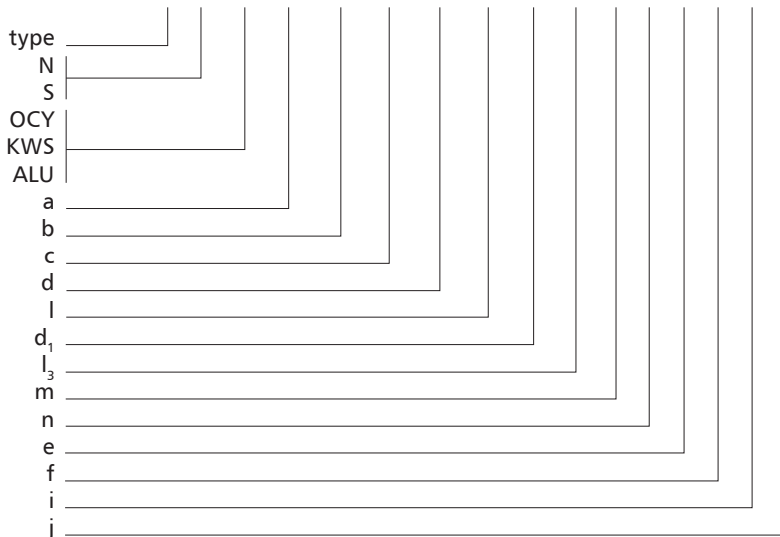
This fitting helps building ductwork with a round take-off at an angle; the angle value depends on the wall slope at the take-off side.

#### Available materials — Product code examples

- TR9-...-... — galvanized steel sheet
- TR9-...-K-... — 1.4301/304 stainless steel sheet
- TR9-...-K-...-316L — 1.4404/316L stainless steel sheet
- TR9-...-A-... — AW-1050A H24 aluminium sheet

#### Product code example

Product code: **TR9-N-OCY-300x500-400x200-600-125-100- 50-50-80-90- 30-30**



- N — low-pressure version
- S — medium-pressure version
- OCY — galvanized steel
- KWS — stainless steel
- ALU — aluminium
- a — width
- b — height
- c — outlet height
- d — take-off height
- l — extension (default l = 30 mm)
- d<sub>1</sub> — take-off diameter
- l<sub>3</sub> — take-off length (default l<sub>3</sub> = 30 mm)
- m — vertical offset
- n — horizontal offset
- e — take-off offset in length
- f — take-off offset in width
- i — extension (default i = 30 mm)
- j — extension (default j = 30 mm)

The standard versions are made in default dimension sizes which do not have to be specified.