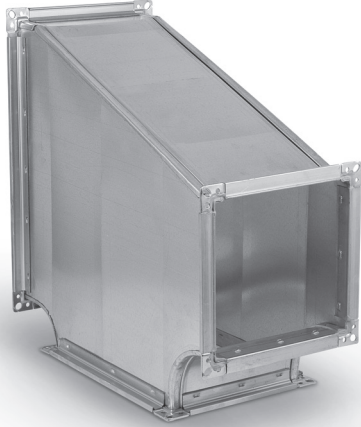
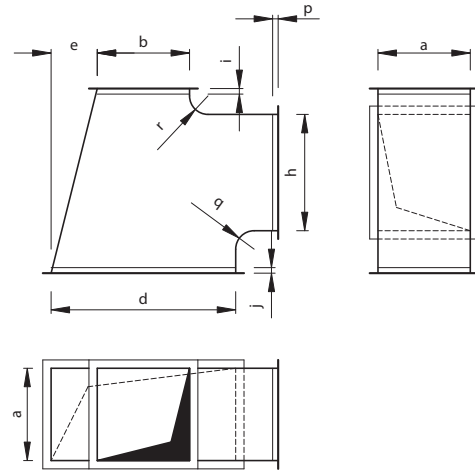


Reducing T-pieces

TR7



Dimensions



Description

The T-piece ends are fitted with sheet angles, and the entire fitting is braced by cross-wise ribbing.

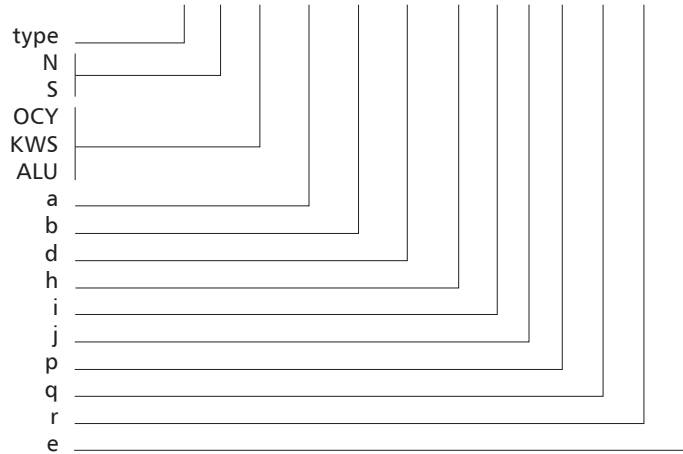
The T-piece helps building ductwork with a take-off branch at 90 degrees, reduction of the main duct clear passage and an offset by any value of size m.

Available materials — Product code examples

- TR7-...-...-... — galvanized steel sheet
- TR7-...-K-...-... — 1.4301/304 stainless steel sheet
- TR7-...-K-...-...-316L — 1.4404/316L stainless steel sheet
- TR-...-A-...-... — AW-1050A H24 aluminium sheet

Product code example

Product code: **TR7-N-OCY-500x200-300-450-30-30-30-120-120-120**



- N — low-pressure version
- S — medium-pressure version
- OCY — galvanized steel
- KWS — stainless steel
- ALU — aluminium
- a — width
- b — height
- d — outlet height
- h — take-off height
- i — extension (default i = 30 mm)
- j — extension (default j = 30 mm)
- p — extension (default p = 30 mm)
- q — radius (default q = 120 mm)
- r — radius (default r = 120 mm)
- e — offset

The standard versions are made in default dimension sizes which do not have to be specified.