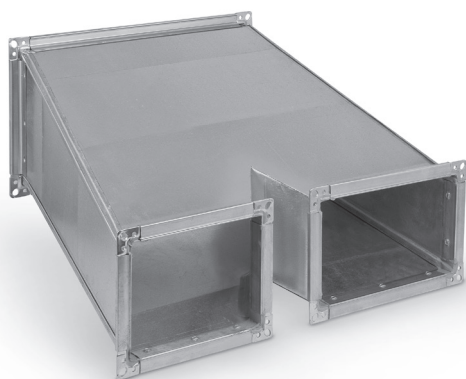
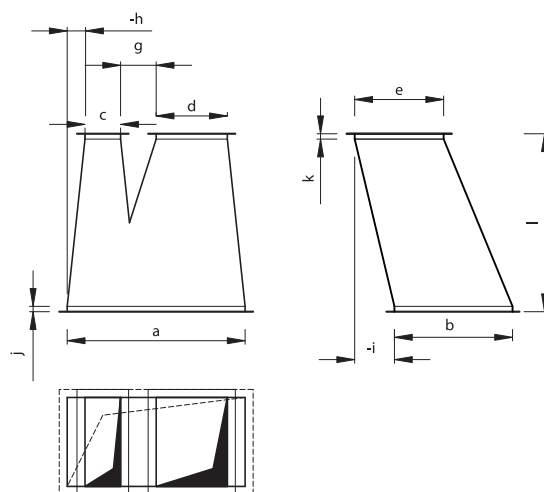


Wye tee TR5



Dimensions



Description

The wye tee (part) are fitted with sheet angles, and the entire fitting is braced by cross-wise ribbing. The wye tee divides the air flow between two parallel legs.

Available materials — Product code examples

- TR5-...-...-...-... — galvanized steel sheet
- TR5-...-K-...-...-... — 1.4301/304 stainless steel sheet
- TR5-...-K-...-...-...-316L — 1.4404/316L stainless steel sheet
- TR5-...-A-...-...-... — AW-1050A H24 aluminium sheet

Product code example

Product code: **TR5 - N - OCY - 500x300 - 100 - 200 - 200 - 600 - 60 - 40 - 60 - 20 - 20**

type	_____	
N	_____	N — low-pressure version
S	_____	S — medium-pressure version
OCY	_____	OCY — galvanized steel
KWS	_____	KWS — stainless steel
ALU	_____	ALU — aluminium
a	_____	a — height
b	_____	b — inlet width
c	_____	c — left-hand clear height
d	_____	d — right-hand clear height
e	_____	e — outlet width
l	_____	l — length
g	_____	g — take-off spacing
h	_____	h — horizontal offset
i	_____	i — vertical offset
j	_____	j — extension (default j = 30 mm)
k	_____	k — extension (default k = 30 mm)