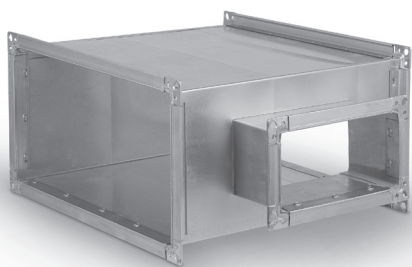


T-pieces with square take-off

TR1



Description

The T-piece ends are fitted with sheet angles, and the entire fitting is braced by cross-wise ribbing.

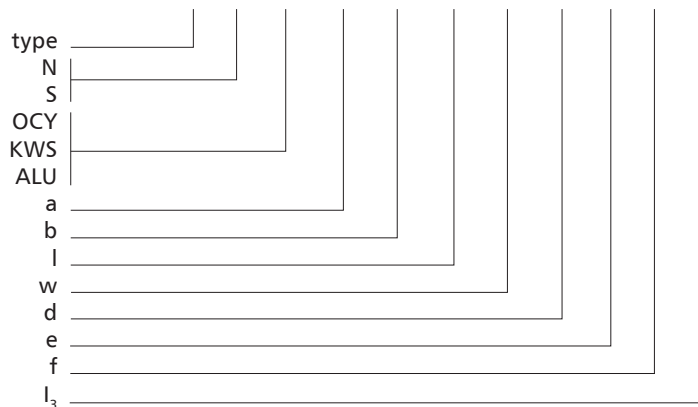
The T-piece helps building ductwork with a take-off branch at 90 degrees and a reduced size. The inlet and outlet sizes are the same.

Available materials — Product code examples

- TR1 -...-...-... — galvanized steel sheet
- TR1-...-K-...-... — 1.4301/304 stainless steel sheet
- TR1-...-K-...-...- 316L — 1.4404/316L stainless steel sheet
- TR1-...-A-...-... — AW-1050A H24 aluminium sheet

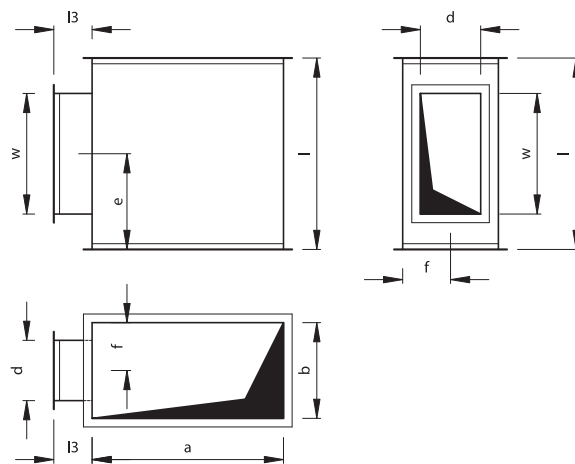
Product code example

Product code: **TR1 - N - OCY - 500x300 - 600 - 450x250 - 20 - 20 - 100**



- N — low-pressure version
- S — medium-pressure version
- OCY — galvanized steel
- KWS — stainless steel
- ALU — aluminium
- a — width
- b — height
- l — length
- w — take-off length
- d — take-off width
- e — take-off offset in length
- f — take-off offset in width
- l₃ — take-off length (default l₃ = 100 mm)

Dimensions



The standard versions are made in default dimension sizes which do not have to be specified.