

ST-ROF-SET-6



Description

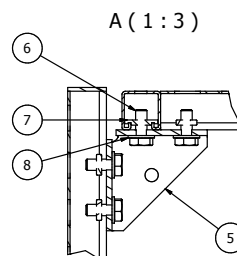
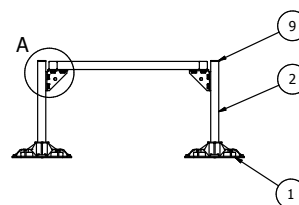
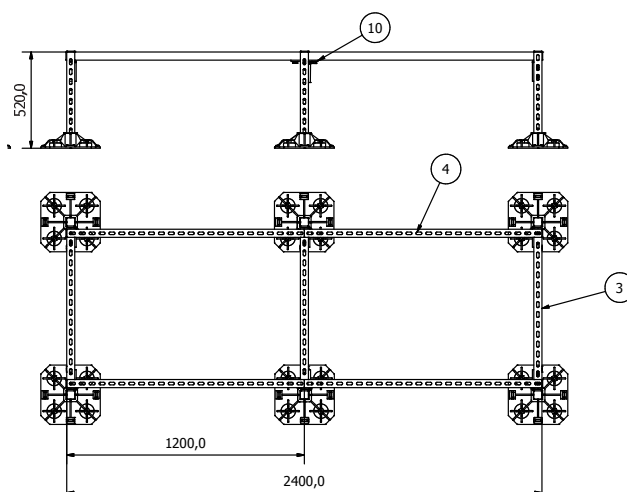
ST-ROF-SET-6 roof support is a set of feet, consoles and frames for installation of ventilation ducts and all types of equipment on the roofs of buildings. The number of possible configurations is virtually limitless. This product is quick and easy to install. It is often used as a carrier frame for roof-installed HVAC units. The maximum continuous load is 720 kg

Product code examples

Product code: **ST-ROF-SET-6**

type _____

Dimensions



Components of the roof support:

Part no	Qty [pcs]	Code	Description
1	6	ST-ROF-330	Roof foot
2	6	LDBSG-41-41-200-0050	Channel strut
3	3	LDBSG-41-41-200-0071	Channel strut
4	4	LDBSG-41-41-200-0120	Channel strut
5	6	LDB-PBTR-41-5	Channel angle bracket
6	28	SRS-M10-35	Screw
7	28	SNP-1008	Slide nut
8	28	PDS-P-10-100	Steel washer
9	10	Z-LDB-41-ST	Channel end cap
10	2	LDB-PT-41-4	Flat bracket

Optional accessories:

ST-ROF-AF - vibration-damping feet with adjustable pitch
ST-ROF-MAT - vibration-damping mat