

# Mounting roof foot

## ST-ROF-AWL-STR



### Description

The ST-ROF-AWL-STR roof strip feet are designed to support light-weight roof equipment, e.g. home split A/C units, pipe bundles, ductwork, or cables.

The ST-ROF-AWL-STR strip feet are available in four length sizes. Each ST-ROF-AWL-STR features a 41x41 mm aluminium channel embedded at the top and along the entire SBR body.



The roof strip feet are attached to the supported equipment with SNP unistrut channel nuts and large 40 mm washers. See details on p. 274.

**Foot length** 250 / 450 / 600 / 1000 mm

**Material:** SBR (water-resistant)

**Max. load:** 250 mm ≤ 1070 N, 450 mm ≤ 2060 N,  
600 mm ≤ 3040 N, 1000 mm ≤ 5000 N

**Fire rating class** B2 acc to DIN 4102

**Temperature resistance:** -40°C to +80°C

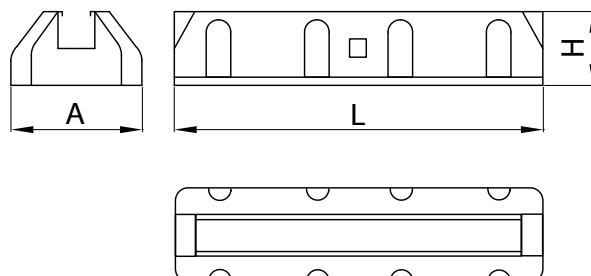
#### Product code examples

Product code: **ST-ROF-AWL-STR - 450**

type \_\_\_\_\_

L \_\_\_\_\_

### Dimensions



Code	A [mm]	B [mm]	H [mm]	Weight [kg]
ST-ROF-AWL-STR-250	160	250	90	0.48
ST-ROF-AWL-STR-450	160	450	90	1.75
ST-ROF-AWL-STR-600	160	600	90	3.1
ST-ROF-AWL-STR-1000	160	1000	90	10.2

Mounting roof foot

# ST-ROF-AWL-STR

## Technical specifications

The information in the table shows the natural frequencies and roof foot insulation at exemplary equipment's loads. The purpose of the feet is to isolate the vibration source from the structure of the device. For optimal foot selection it is important to determine the required degree of insulation (expressed in %). It is important to remember that not all situations require maximum vibration damping.

Load [kg]	Natural frequency [Hz]	Insulation [%]
25	52,0	56.8
50	36,7	80.7
75	30,2	87.1
100	26,2	90.2
125	23,3	92.2

