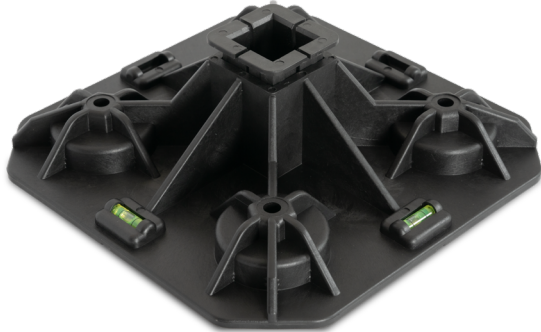


Mounting roof feet

ST-ROF-330/ST-ROF-AW-330



Description

The ST-ROF and ST-ROF-AW roof feet are supports for various types of roof-mounted units, including condensers, AHUs, A/C outdoor units, or solar panels. This product can be combined with LDBST 41-41 strut channel to provide frames and racks for ventilation ductwork installation, as well as bridges, ladders, duct and line passageways on rooftops. The 2 integrated water levels help the fitters to precisely level out the roof foot. Each roof foot is made of a humidity- and UV-resistant plastic.

ST-ROF - roof foot without legs and vibration-damping mats (ST-ROF-MAT mat can be ordered separately).

ST-ROF-AW - a roof foot with vibration-damping legs, max. 10° pitch adjustment.



Absorbing adjustable legs for roof feet

Material: glass fiber-reinforced polypropylene

(PP)

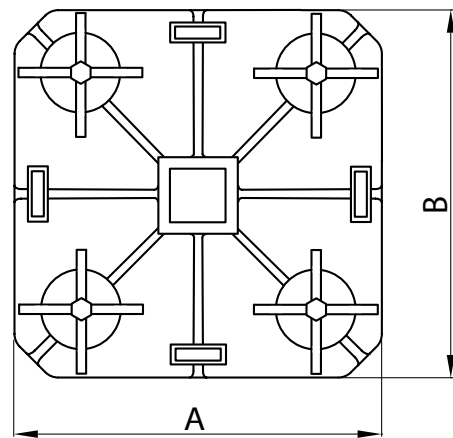
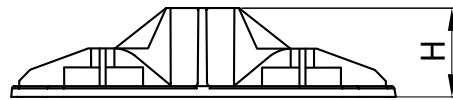
Max. load: 2200N

Product code examples

Product code: **ST-ROF - 330**

type _____
AxA _____

Dimensions



Code	A [mm]	B [mm]	H [mm]	Weight [kg]
ST-ROF-330	300	300	75	1,17
ST-ROF-AW-330	300	300	75	1,55