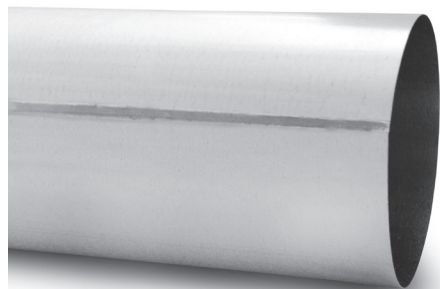


Plain butt-welded ducts

SRGW



Description

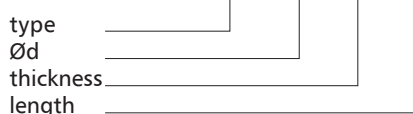
SRGW plain butt-welded ducts are available in nominal diameters of Ø100 to 710 and in 0.5 to 1.5 m long sections. The available sheet thickness ranges from 0.5 to 0.9 mm. Butt welds provide optimum air tightness, high strength, and a neat finish. The ducts meet requirements of air tightness class D according to EN 12237.

Available materials:

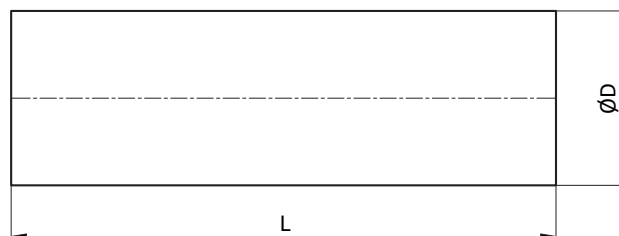
- SRGW-... — galvanized steel sheet,
sheet thickness: 0.5 / 0.6 / 0.7 / 0.8 / 0.9 mm
- SRGW-K-... — 1.4301/304 stainless steel sheet,
sheet thickness: 0.5 / 0.7 mm
- SGRW-A-... — aluminium sheet,
sheet thickness: 0.6 / 0.8 mm

Product code example

Product code: **SRGW - aaa - bbb - ccc**



Dimensions



$\varnothing d_{nom}$ (mm)	πd (m)	$\frac{\pi d^2}{4}$ (m ²)
80	0.251	0.005
100	0.314	0.008
125	0.393	0.012
140	0.440	0.015
150	0.471	0.018
160	0.502	0.020
180	0.565	0.025
200	0.628	0.031
224	0.703	0.039
250	0.785	0.049
280	0.879	0.062
300	0.942	0.071
315	0.989	0.078
355	1.115	0.099
400	1.256	0.126
450	1.413	0.159
500	1.570	0.196
560	1.758	0.246
600	1.884	0.283
630	1.978	0.312
710	2.229	0.396