

Plain seam-welded ducts

SRGL



Description

SRGL plain seam-welded ducts are available in nominal diameters of Ø100 to 710 and in 1-m or 0.5-m long sections. The available sheet thickness ranges from 0.5 to 0.8 mm. The ducts meet requirements of air tightness class D according to EN 12237.

Available materials:

SRGL-... — galvanized steel sheet,
sheet thickness: 0.5 / 0.6 / 0.7 / 0.8 mm

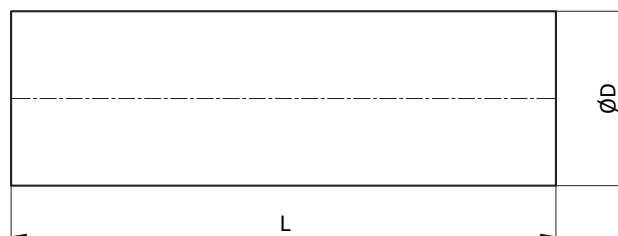
SRGL-K-... — 1.4301/304 stainless steel sheet,
sheet thickness: 0.5 / 0.7 mm

Product code example

Product code: **SRGL - aaa - bbb - ccc**

type _____
 Ød _____
 thickness _____
 length _____

Dimensions



| $\varnothing d_{nom}$ (mm) | πd (m) | $\frac{\pi d^2}{4}$ (m ²) |
|-------------------------------|----------------|--|
| 80 | 0.251 | 0.005 |
| 100 | 0.314 | 0.008 |
| 125 | 0.393 | 0.012 |
| 140 | 0.440 | 0.015 |
| 150 | 0.471 | 0.018 |
| 160 | 0.502 | 0.020 |
| 180 | 0.565 | 0.025 |
| 200 | 0.628 | 0.031 |
| 224 | 0.703 | 0.039 |
| 250 | 0.785 | 0.049 |
| 280 | 0.879 | 0.062 |
| 300 | 0.942 | 0.071 |
| 315 | 0.989 | 0.078 |
| 355 | 1.115 | 0.099 |
| 400 | 1.256 | 0.126 |
| 450 | 1.413 | 0.159 |
| 500 | 1.570 | 0.196 |
| 560 | 1.758 | 0.246 |
| 600 | 1.884 | 0.283 |
| 630 | 1.978 | 0.312 |
| 710 | 2.229 | 0.396 |