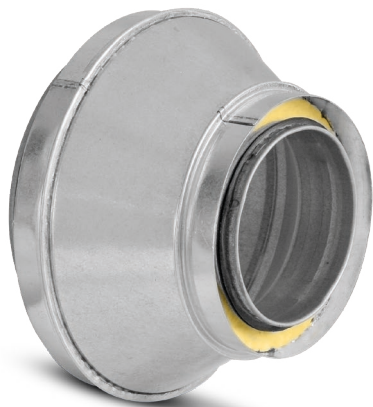


RSCLLI



Description

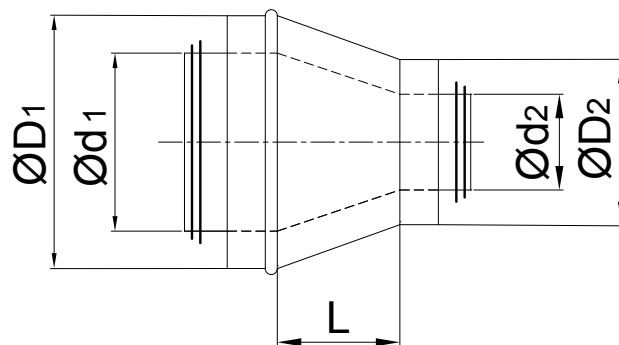
All RSCLLI pre-insulated reducers consist of an inner reducer with an EPDM gasket and an outer reducer without gaskets.

Product code example

Product code: **RSCLLI - 25 - 200 - 125**

type	_____	_____	_____
Insulation	_____	_____	_____
Ød1	_____	_____	_____
Ød2	_____	_____	_____

Dimensions



isolation 10 mm					
Ød ₁ [mm]	Ød ₂ [mm]	ØD ₁ [mm]	ØD ₂ [mm]	L [mm]	weight [kg]
125*	100	160	125	42	0.3
160	100	180	125	60	0.4
160	125	180	160	41	0.5
200	100	224	125	45	0.6
200	125	224	160	63	0.7
200	160	224	180	45	0.5
250	125	280	160	51	1.0
250	160	280	180	74	1.0
250	200	280	224	53	0.9

*standard RSCLLI-10-125-15 is made of the outer jacket of diameter d=160mm, it is possible to order the execution of the outer jacket with a diameter of 150mm, then the sign is as follows: RSCLLI-10-125-150-15

isolation 16 mm					
Ød ₁ [mm]	ØD ₁ [mm]	Ød ₂ [mm]	ØD ₂ [mm]	L [mm]	Weight [kg]
125	100	157	132	42	0.5
160	100	192	132	60	0.6
160	125	192	157	41	0.7
200	100	232	132	45	0.8
200	125	232	157	63	0.8
200	160	232	192	45	0.7
250	125	280	157	51	1.1
250	160	280	192	74	1.1
250	200	280	232	53	1.0

RSCLLI

Dimensions

25 mm insulation					
$\varnothing d_1$ [mm]	$\varnothing d_2$ [mm]	$\varnothing D_1$ [mm]	$\varnothing D_2$ [mm]	L [mm]	Weight [kg]
125	100	180	150	64	0.9
140	100	200	150	85	1
140	125	200	180	51	0.9
150	100	200	150	99	1.2
150	125	200	180	64	1
150	140	200	200	44	0.9
160	100	224	150	112	1.3
160	125	224	180	78	1.2
160	140	224	200	57	1.1
160	150	224	200	44	1
200	100	250	150	167	2
200	125	250	180	133	1.9
200	140	250	200	112	1.8
200	150	250	200	99	1.6
200	160	250	224	85	1.6
200	180	250	224	58	1.4
224	100	280	150	200	2.4
224	125	280	180	166	2.2
224	140	280	200	145	2.3
224	150	280	200	132	2.2
224	160	280	224	118	2.2
224	180	280	224	90	2
224	200	280	250	63	1.9
250	100	300	150	236	3.1
250	125	300	180	202	3
250	140	300	200	181	2.8
250	150	300	200	167	2.7
250	160	300	224	154	2.7
250	180	300	224	126	2.4
250	200	300	250	99	2.4
250	224	300	280	66	2.2

25 mm insulation					
$\varnothing d_1$ [mm]	$\varnothing d_2$ [mm]	$\varnothing D_1$ [mm]	$\varnothing D_2$ [mm]	L [mm]	Weight [kg]
280	125	315	180	243	3.9
280	140	315	200	222	3.8
280	150	315	200	209	3.6
280	160	315	224	195	3.5
280	180	315	224	167	3.3
280	200	315	250	140	3.2
280	224	315	280	107	3
280	250	315	300	71	2.8
300	125	355	180	270	4.5
300	140	355	200	250	4.4
300	150	355	200	236	4.3
300	160	355	224	222	4.2
300	180	355	224	195	3.9
300	200	355	250	167	3.8
300	224	355	280	135	3.7
300	280	355	315	58	3.3
315	100	355	150	310	5.2
315	125	355	180	291	5.1
315	140	355	200	270	5.1
315	150	355	200	257	5.5
315	160	355	224	243	4.8
315	180	355	224	216	4.5
315	200	355	250	188	4.4
315	224	355	280	155	4
315	250	355	300	119	3.8
250	140	300	200	181	2.8
250	150	300	200	167	2.7
250	160	300	224	154	2.7
250	180	300	224	126	2.4
250	200	300	250	99	2.4
250	224	300	280	66	2.2
315	280	355	315	78	3.5
315	300	355	355	51	3.2
355	160	400	224	298	6.4
355	180	400	224	270	6.1
355	200	400	250	243	5.8
355	224	400	280	224	5.7
355	250	400	300	174	5.3
355	280	400	315	133	4.9
355	300	400	355	106	4.6
355	315	400	355	85	4.4

RSCLLI

Dimensions

25 mm insulation					
$\varnothing d_1$ [mm]	$\varnothing d_2$ [mm]	$\varnothing D_1$ [mm]	$\varnothing D_2$ [mm]	L [mm]	Weight [kg]
400	160	450	224	365	8.3
400	180	450	224	337	7.9
400	200	450	250	310	7.7
400	224	450	280	277	7.4
400	250	450	300	241	7.1
400	280	450	315	200	6.8
400	300	450	355	172	6.4
400	315	450	355	152	6.1
400	355	450	400	97	5.6
450	200	500	250	378	9.8
450	224	500	280	346	9.5
450	250	500	300	310	9.1
450	280	500	315	269	8.7
450	300	500	355	241	8.3
450	315	500	355	221	7.8
450	355	500	400	166	7.3
450	400	500	450	109	6.7
500	224	560	280	414	11.6
500	250	560	300	378	11.3
500	280	560	315	337	10.9
500	300	560	355	310	10.5
500	315	560	400	289	10.2
500	355	560	400	234	9.5
500	400	560	450	177	8.8
500	450	560	500	109	7.8