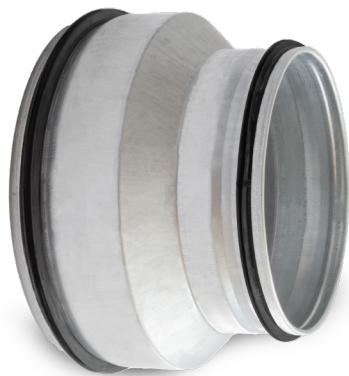


# RPCL-N



## Description

The RPCL-N press-formed reduction piece has both ends male for plugging directly into the ducts. There is no stop fold provided and the opposite EPP-43-SRGL ducts joined by this reduction piece are in contact, which deletes cold bridges, while greatly improving the aesthetic appearance of the connection. For EPP-15-SRGL ducts, we suggest finishing the joint with the rubber FOAM-TAPE. The ends feature double EPDM gaskets to ensure the highest class of air tightness.

### Available materials — Product code example

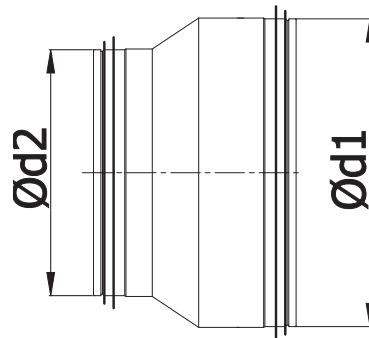
RPCL-N-...-... – galvanized steel sheet

### Product code example

Product code: **RPCL-N - aaa - bbb**

type	_____
Ød <sub>1</sub>	_____
Ød <sub>2</sub>	_____

## Dimensions

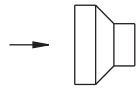


Ød1 [mm]	Ød2 [mm]	Weight [kg]
160	125	0,20
200	125	0,40
200	160	0,30

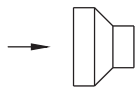
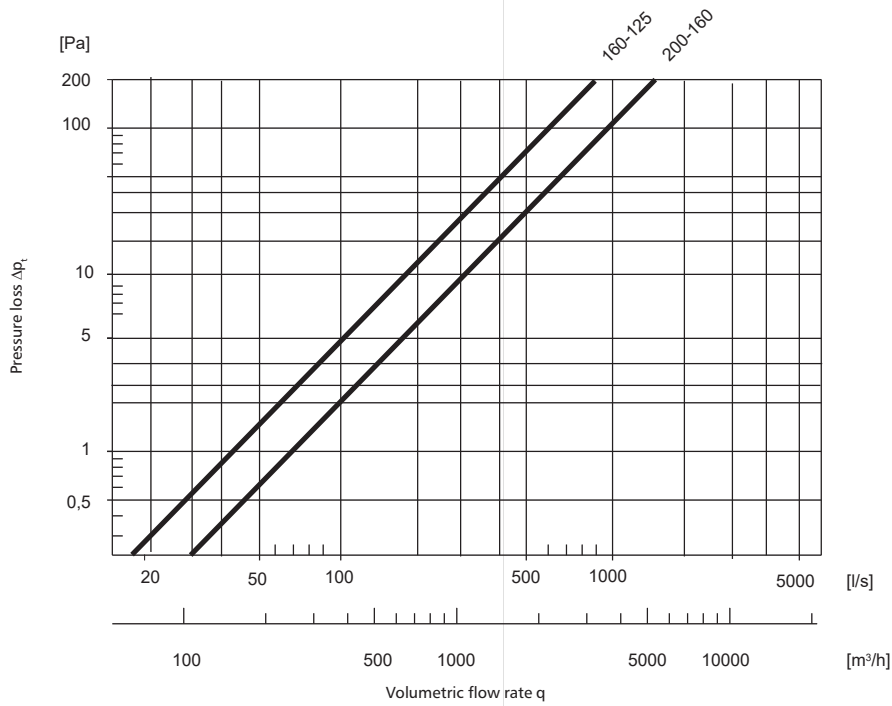
Pressed reducer with gasket for EPP ducts | male ends

# RPCL-N

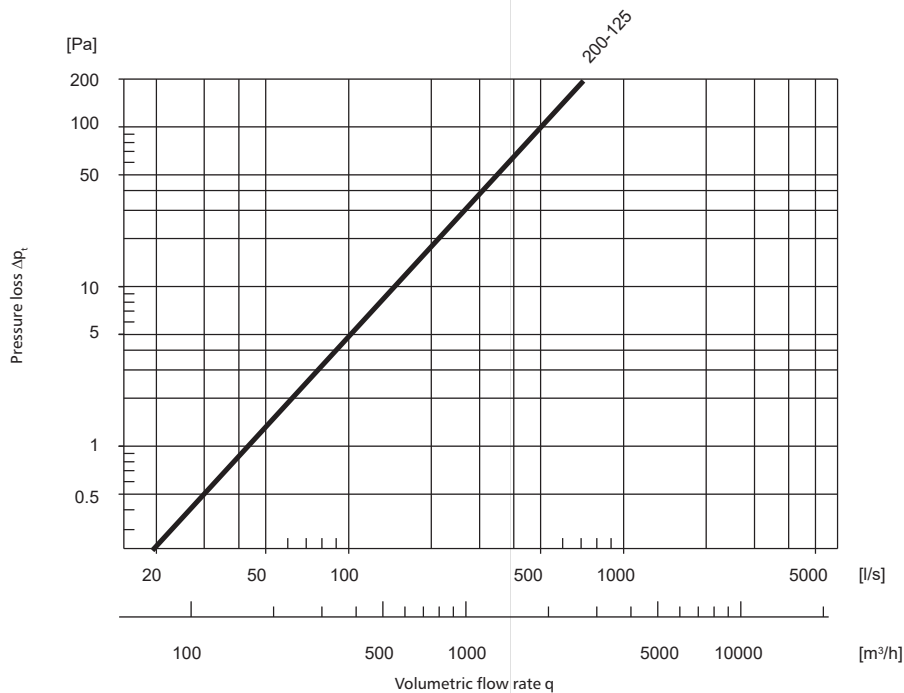
## Technical specifications



1st reduction stage

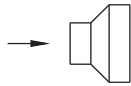


2nd reduction stage

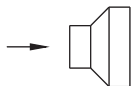
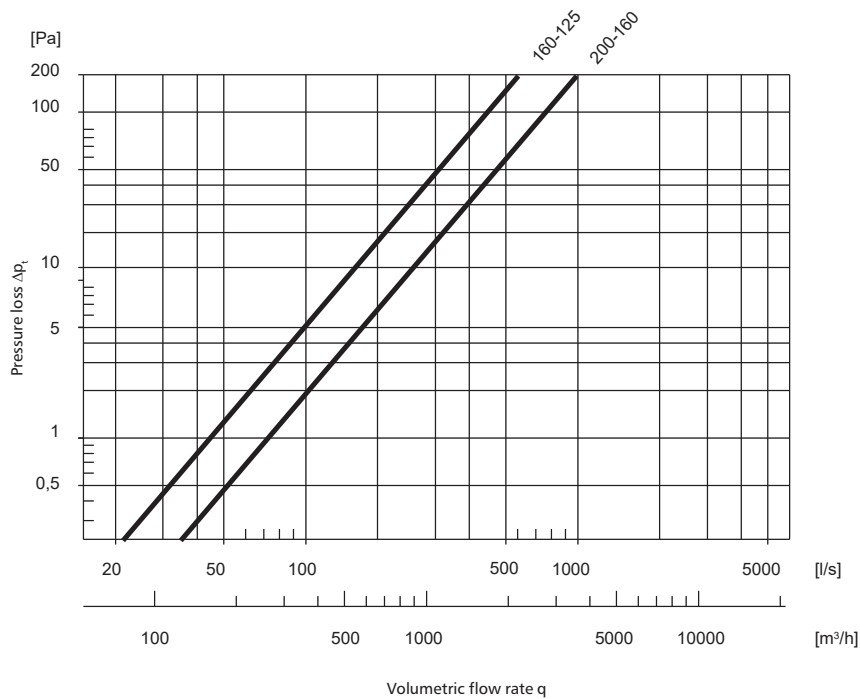


# RPCL-N

## Technical specifications



1rd reduction stage



2st reduction stage

