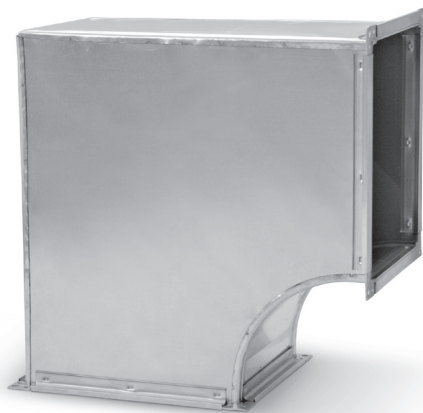


Variable clearance elbows

QBFR



Description

The 90° elbows are fitted with sheet angles, and the entire product is braced by cross-wise ribbing.

The elbows are recommended for low air velocity and/or low-pressure ventilation systems and smaller sizes of side $b \leq 400$ mm.

The standard radius is $r = 120$ mm.

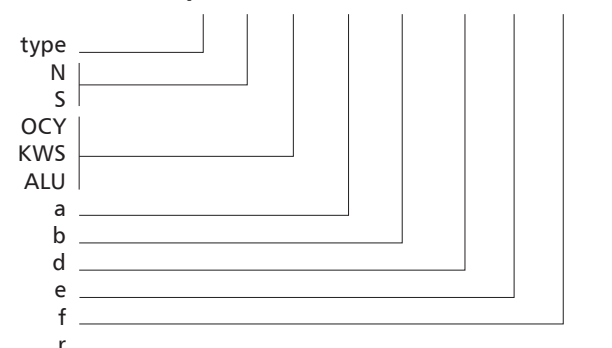
Typical applications of the elbows include rerouting the ductwork by 90 degrees with the inner clearance varying along the elbow path.

Available materials — Product code examples

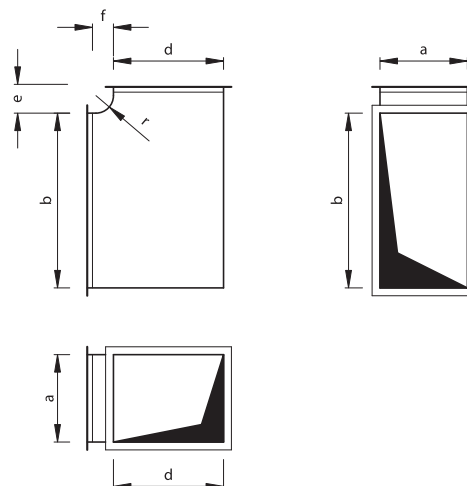
QBFR-...-...-... — galvanized steel sheet
 QBFR-...-K-...-... — 1.4301/304 stainless steel sheet
 QBFR-...-K-...-...-316L — 1.4404/316L stainless steel sheet
 QBFR-...-A-...-... — AW-1050A H24 aluminium sheet

Product code example

Product code: **QBFR-N-OCY-500x300-400-30-30-120**



Dimensions



N — low-pressure version
 S — medium-pressure version
 OCY — galvanized steel
 KWS — stainless steel
 ALU — aluminium
 a — width
 b — height
 d — outlet height
 e — extension (default $e = 150$ mm)
 f — extension (default $f = 150$ mm)
 r — radius (default $r = 120$ mm)

The elbows are available at 90° *only*. The standard versions are made in default dimension sizes which do not have to be specified.