

Plastic branch outlet 90°

PVC-TPCF-90



Description

Plastic branch outlet with socket formed part round with interior stop for connecting pipes by welding (or PVC bonding up to Ø 250). Manufactured by the process of injection moulding (Ø 50-400) or segmented welding.

Available materials - designation example

PVC-TPCF-... - PVC polyvinyl chloride
PPs-TPCF-... - PPs flame resistant polypropylene

Available materials - upon special order

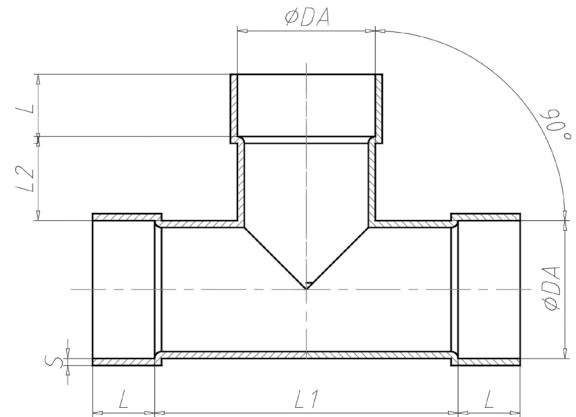
PVCW-TPCF-... - white PVC polyvinyl chloride
PP-TPCF-... - PP polypropylene
PEELs-TPCF-... - PP-EL-s flame resistant electrically
conductive polypropylene
PE-TPCF-... - PE polyethylene
PVDF-TPCF-... - PVDF plastic

Designation example:

Product Code: **PVC - TPCF - aaa - 90**

material _____
type _____
ØDA _____
angle _____

Dimensions



PVC / PVCW					
Ø [mm]	L [mm]	L ₁ [mm]	L ₂ [mm]	Tolerance [mm]	S [mm]
50	25	105	28	0.3	2.5
63	25	105	22	0.3	2.5
75	40	105	15	0.3	2.5
90	40	120	15	0.3	2.5
110	40	140	15	0.3	2.5
125	40	155	15	0.3	2.5
140	40	170	15	0.4	2.5
160	40	190	15	0.4	2.5
180	40	210	15	0.4	2.5
200	40	230	15	0.4	2.5
225	40	270	15	0.5	2.5
250	40	280	12	0.5	2.5
280	50	320	20	0.6	2.5
315	50	345	8	0.6	4.0
355	45	405	55	0.7	3.0
400	45	460	60	0.7	3.0
450	50	586	70	0.8	3.6
500	50	650	75	0.9	5.0
560	-	-	-	-	-
600	60	780	90	1.0	5.0
630	-	-	-	-	-
700	70	910	105	2.5	6.0
710	-	-	-	-	-
800	80	1040	120	3.0	8.0

Plastic branch outlet 90°

PVC-TPCF-90

Dimensions

PE / PP / PPs / PP-EL-s / PVDF					
Ø [mm]	L [mm]	L ₁ [mm]	L ₂ [mm]	Tolerance [mm]	S [mm]
50	25	105	28	0.7	3.0
63	25	105	22	0.7	3.0
75	40	105	15	0.7	3.0
90	40	120	15	0.9	3.0
110	40	140	15	1.0	3.0
125	40	155	15	1.2	3.0
140	40	170	15	1.3	3.0
160	40	190	15	1.5	3.0
180	40	210	15	1.7	3.0
200	40	230	15	1.8	4.0
225	40	270	15	1.9	4.0
250	40	280	12	2.0	4.0
280	50	320	20	2.2	4.0
315	50	345	8	2.4	5.0
355	50	405	55	2.7	5.0
400	50	460	60	3.0	6.0
450	50	586	70	3.5	5.0
500	50	650	75	4.0	5.0
560	60	728	85	4.5	6.0
600	60	780	90	4.5	6.0
630	70	820	100	4.5	6.0
700	70	910	105	4.5	6.0
710	80	924	110	4.5	6.0
800	80	1040	120	4.5	8.0