

# Plastic ventilation double socket

## PVC-MSF



### Description

Plastic double ventilation socket formed part round with interior stop for connecting pipes by welding (or PVC bonding up to Ø 250). Manufactured by the process of injection moulding (Ø 50-400) or prefabricated (from Ø 450).

#### Available materials - designation example

PVC-MSF-... - PVC polyvinyl chloride  
PPs-MSF-... - PPs flame resistant polypropylene

#### Available materials - upon special order

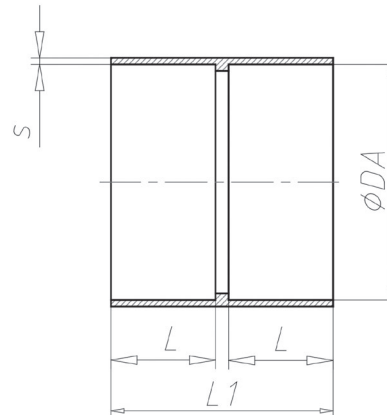
PVCW-MSF-... - white PVC polyvinyl chloride  
PP-MSF-... - PP polypropylene  
PEELs-MSF-... - PP-EL-s flame resistant electrically  
conductive polypropylene  
PE-MSF-... - PE polyethylene  
PVDF-MSF-... - PVDF plastic

#### Designation example:

Product Code: **PVC - MSF - aaa**

material \_\_\_\_\_  
type \_\_\_\_\_  
ØDA \_\_\_\_\_

### Dimensions



PVC / PVCW				
Ø [mm]	L [mm]	L <sub>i</sub> [mm]	Tolerance [mm]	S [mm]
50	45	45*	0,3	2,5
63	45	45*	0,3	2,5
75	40	85	0,3	2,5
90	40	85	0,3	2,5
110	40	85	0,3	2,5
125	40	85	0,3	2,5
140	40	85	0,4	2,5
160	40	85	0,4	2,5
180	40	85	0,4	2,5
200	40	85	0,4	2,5
225	40	85	0,5	2,5
250	40	85	0,5	2,5
280	50	105	0,6	2,5
315	50	105	0,6	2,5
355	50	105	0,7	3,0
400	50	105	0,7	3,0
450	55	120	0,8	5,0
500	55	120	0,9	5,0
560	-	-	-	-
600	55	120	1,0	6,0
630	-	-	-	-
700	70	150	2,5	6,0
710	-	-	-	-
800	80	170	3,0	8,0

\* Product with no inner stop.

## Plastic ventilation double socket

# PVC-MSF

### Dimensions

PE / PP / PPs / PP-EL-s / PVDF				
Ø [mm]	L [mm]	L <sub>1</sub> [mm]	Tolerance [mm]	S [mm]
50	45	45*	0,7	3,0
63	45	45*	0,7	3,0
75	40	85	0,7	3,0
90	40	85	0,9	3,0
110	40	85	1,0	3,0
125	40	85	1,2	3,0
140	40	85	1,3	3,0
160	40	85	1,5	3,0
180	40	85	1,7	3,0
200	40	85	1,8	3,0
225	40	85	1,9	3,5
250	40	85	2,0	3,5
280	50	105	2,2	3,5
315	50	105	2,4	4,0
355	50	105	2,7	4,0
400	50	105	3,0	4,5
450	55	120	3,5	5,0
500	55	120	4,0	5,0
560	55	120	4,5	6,0
600	55	120	4,5	6,0
630	55	120	4,5	6,0
700	70	150	4,5	6,0
710	80	170	4,5	6,0
800	80	170	4,5	8,0