

Expansion boxes to be mounted under the swirl cassette diffuser **PRW**



Description

The PRW expansion boxes are the attachment units for swirling diffusers in low- and medium-pressure ventilation systems. They are used to stabilize air flow as well as to achieve its uniform flow to the diffuser.

The boxes may be connected to ventilation systems in lateral or upper plane. They can be equipped with a gate fastened to the intake connector pipe.

The NKSD-C, NK+SWA, NK+SWB, NKSD+CB diffuser is fastened to the PRW expansion box by means of a screw rivet.

We produce boxes padded with a flexible and high-temperature resistant and insulation made of natural rubber.

It is possible to order the boxes basing on drawings delivered by the Customer.

Symbols meaning:

Assembly:

B – lateral connection

G – upper connection

Equipment:

D – with a damper

Insulation:

I – insulated

Material: galvanized steel

Optionally acid resistant steel

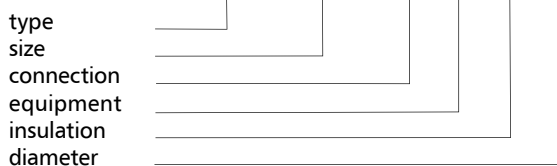
Finishing:

Unpainted as a standard

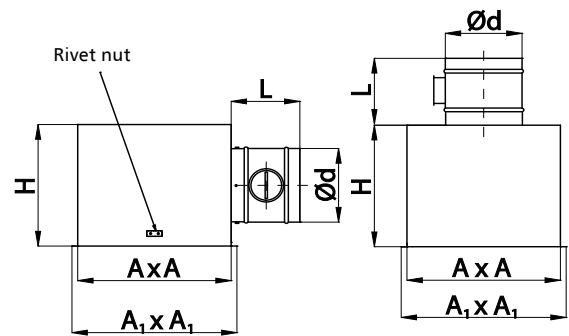
Optionally powder-painted according to RAL 9016

Example identification

Product code: PRW 295 B D I ød



Dimensions



type B - lateral connection

type G - upper connection

Type of difusser [mm]	AxA [mm]	A ₁ x A ₁ [mm]	H [mm]	Max. ød [mm]	Stand. ød [mm]	L [mm]
298	261x261	291x291	250	200	160	165
396	367x367	391x391	300	250	200	165
498	461x461	491x491	300	250	200	165
598-24	561x561	591x591	330	250	250	165
598-48	580x580	591x591	330	250	250	165
623	595x595	625x625	360	315	315	165
623	595x595	625x625	360	315	315	165