

Plenum boxes for NK-SWA diffusers

PRR



Description

The PRR plenum boxes connect the ductwork ends to the NK-SWA swirl diffusers in low- or medium-pressure ventilation systems.

A plenum box stabilizes the air supply, providing uniform air flow rate before the air enters the diffuser. The ductwork is connected to the plenum box inlet port at the side or from above, depending on the product type. The inlet port can be provided with a damper. ALNOR fabricates plenum boxes lined with flexible and heat-resistant 9 mm thick rubber insulation mats.

Custom plenum boxes manufactured as per customer specifications are also available.

Symbols:

Type of connection:

B — side inlet

G — top inlet

Equipment:

D — with air damper

Insulation:

I — insulated

Available materials — Product code examples

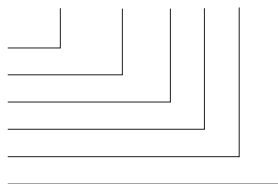
PRR-...-...-...- galvanized steel sheet

PRR-...-...-...- galvanized steel sheet with powder-coated finish
colour: RAL 9016

Product code example

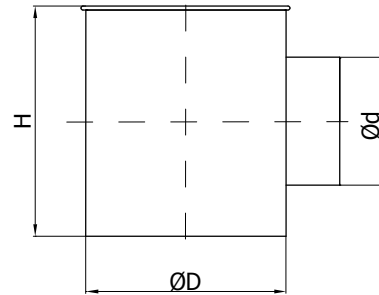
Product code: **PRR - 300 - B - D - I - Ød**

type
size
connection
equipment
insulation
diameter

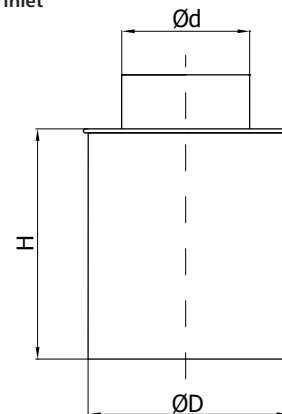


Dimensions

Type B — side inlet



Type G — top inlet



Size	ØD [mm]	Max. Ød [mm]	Standard Ød [mm]	H [mm]
300	254	200	125	300
400	336	200	125	300
500	440	250	160	360
600	530	315	200	420
625	530	315	200	420