

Plenum boxes for GCR, ACL, ACP, AKL, AKP, DKF diffusers

PRO-NL



Description

The PRO-NL plenum boxes connect the ductwork ends to round vane diffusers in low- or medium-pressure ventilation systems.

A plenum box stabilizes the air supply, providing uniform air flow rate before the air enters the diffuser. The ductwork is connected to the plenum box inlet port at the side or from above, depending on the product type. The inlet port can be provided with a damper.

ALNOR fabricates plenum boxes lined with flexible and heat-resistant 9 mm thick rubber insulation mats. Custom plenum boxes manufactured as per customer specifications are also available.

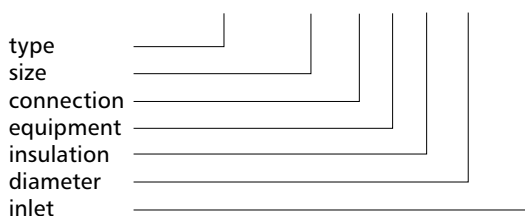
Material: galvanized steel
Stainless steel version available on request.

Finish:
The standard version is supplied unpainted.
RAL 9016 powder-coated finish is available on request.

Available materials - Product code examples
PRO-NL..... - galvanized steel sheet

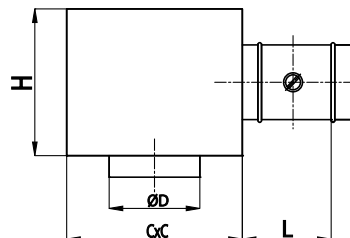
Product code example

Product code: **PRO-NL - 150 - B - D - I - Ød - NSL**

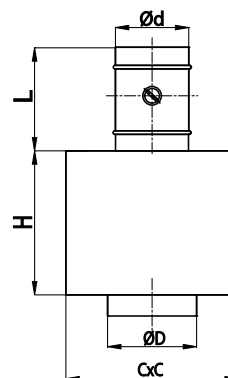


Dimensions

Type B — side inlet



Type G — top inlet



Size	ØD [mm]	C x C [mm]	H [mm]	Stand. Ød [mm]	Max Ød [mm]	Min Ød [mm]
100	100	190	190	100	100	80
125	125	215	215	125	125	100
150	150	240	240	150	150	100
160	160	240	250	160	160	100
200	200	290	290	200	200	125
250	250	340	340	250	250	125
315	315	405	340	315	315	160
355	355	445	445	355	355	160
400	400	490	490	400	400	200

Symbols

Connection:

- B - side inlet
- G - top inlet

Equipment:

- D - with air damper

Izolacja:

- I - rubber mat insulation 9mm
- IF - AirFelt insulation 30mm (on special order)
- IW - mineral wool 30mm insulation with veil (on special order)

Connection:

- PRO-NL..... - male
- PRO-NL.....- MSF - female
- PRO-NL.....- NSL - male with seal