

Adapter for clamp-together TRANS-Quick & Spiral® system

NSLQT / NSQT



Description

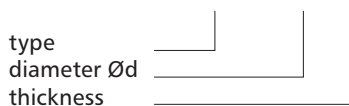
The adapter is used for joining TRANS-Quick ducts with Spiral® System circular ducts. The adapter has a rolled-up lip on the on end, on the other male connection with a seal.

Available materials - designation example

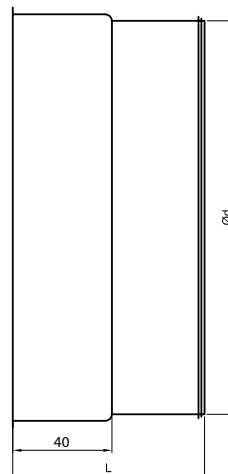
NSLQT-160-090 - galvanised steel sheet

Designation example

Product code: **NSLQT - aaa - bbb**



Dimensions



Diameter Ød [mm]	L [mm]
100	76
125	76
150	76
160	76
180	76
200	76
225	76
250	76
300	76
315	76
350	95
400	95
450	115
500	115
550	115
600	115