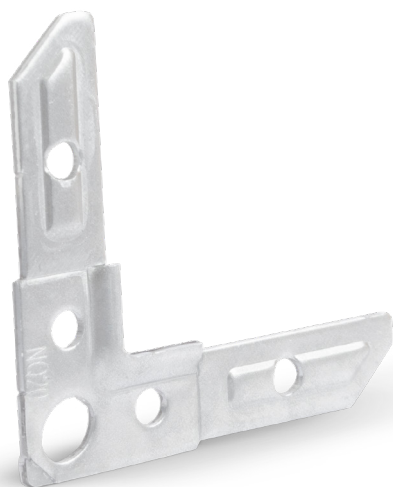


Corner for square duct flange frames

NQ



Description

NQ corner combined with PQ flange profile are used for building rectangular ventilation ducts. The standard NQ-20 corner piece is suitable for rectangular duct sections with the long side up to ca. 800 mm. For bigger sizes, the NQ-20L long corner is recommended. If the short side of the rectangular duct section is less than 150 mm, it is better to use the NQ-20K short corner. For larger ventilation ducts, NQ-30 and NQ-40 corner are required.

Available materials — Product code examples

- NQ-C-...-... - galvanized steel sheet
- NQ-K-...-...-K - 1.4301/304 stainless steel sheet
- NQ-K-...-...-316L - 1.4404/316L stainless steel sheet, molybdenum-enriched
- NQ-A-...-... - AW-1050A H24 aluminium sheet

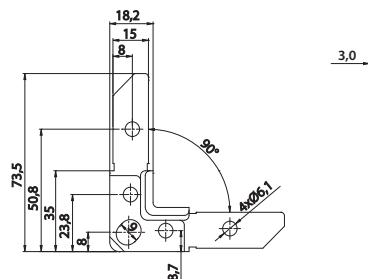
Product code example

Product code: **NQ - ... - 20**

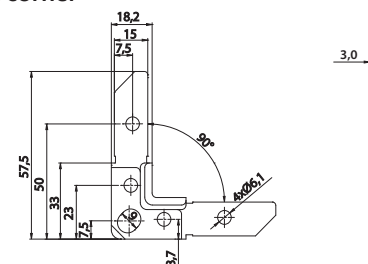
type _____
 material _____
 size _____

Dimensions

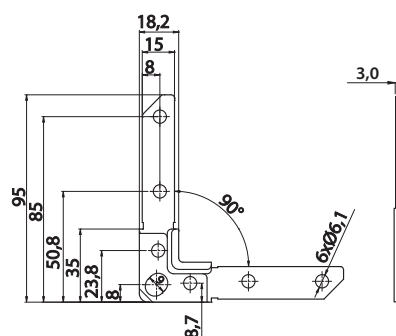
NQ-...-20 corner



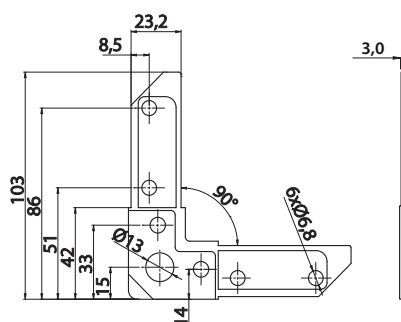
NQ-...-20K corner



NQ-...-20L corner



NQ-...-30 corner



NQ-...-40 corner

