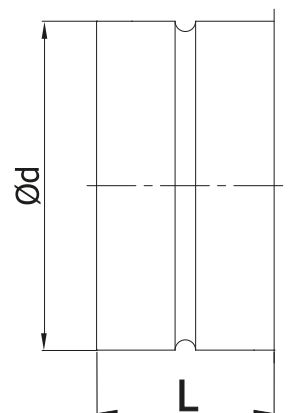


Adapter for clamp-together TRANS-Quick & Spiral® system

MSLQT



Dimensions



Description

Adapter is used for joining TRANS-Quick ducts with Spiral® System fittings. The adapter has a rolled-up lip at the one end, at the other female connection.

Available materials - designation example
MSLQT-160-0,7 - galvanised steel sheet

Designation example

Product Code: MSLQT - aaa - bbb

type
 diameter Ød
 thickness

Diameter Ød [mm]	L [mm]
100	66
125	66
150	66
160	66
180	66
200	66
225	66
250	66
300	66
315	66
350	108
400	108
450	148
500	148
550	148
600	148