

Access door for TRANS-Quick system

IPRQT-DUCT-H



Description

The access door is pre-installed on the TRANS-Quick pipe. Access doors are equipped with hinges, draw latches and EPDM seals. The pipe is butt welded and has with a rolled-up edge. In the IPRQT-DUCT-H2 version, only draw latches are used for fastening instead of hinges. This solution allows easy dismantling the cover in hard to reach places. Available in 0.7 or 0.9 mm thickness.



The photo on the left shows IPRQT-DUCT-H2 access door with the possibility of removing the cover completely. Especially useful in hard to reach places.

Available materials - designation example

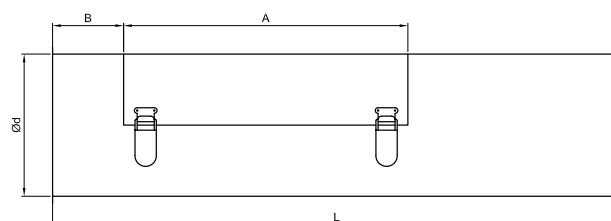
IPRQT-DUCT-H-... - galvanised steel sheet
 IPRQT-DUCT-H2-... - galvanised steel sheet

Designation example

Product Code: IPRQT-DUCT-H - aaa

type _____
 diameter Ød _____

Dimensions



Diameter Ød (mm)	Sheet thickness (mm)	L (mm)	A (mm)	B (mm)
100	0.7	400	180	50
125	0.7	400	180	50
150	0.7	500	230	50
160	0.7	500	230	50
180	0.7	600	280	50
200	0.7	600	280	50
225	0.7	600	280	50
250	0.7	800	380	150
300	0.7	800	380	150
315	0.7	800	380	150
350	0.7	1000	480	150
400	0.7	1000	480	150
450	0.7	1000	480	150
500	0.7	1000	480	150
550	0.7	1000	480	150
600	0.7	1000	480	150
100	0.9	400	180	50
125	0.9	400	180	50
140	0.9	400	180	50
150	0.9	500	230	50
160	0.9	500	230	50
180	0.9	600	280	50
200	0.9	600	280	50
225	0.9	600	280	50
250	0.9	800	380	150
280	0.9	800	380	150
300	0.9	800	380	150
315	0.9	800	380	150
350	0.9	1000	480	150
400	0.9	1000	480	150
450	0.9	1000	480	150
500	0.9	1000	480	150
550	0.9	1000	480	150
600	0.9	1000	480	150