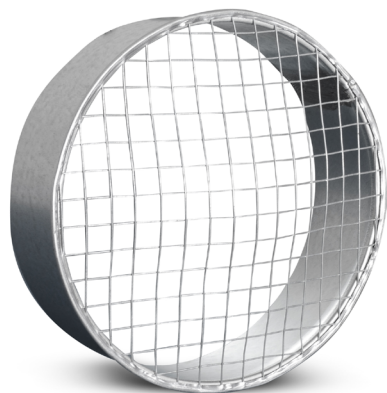


Female take-off with a mesh for smoke extraction system

ILSNF-SMO**Description**

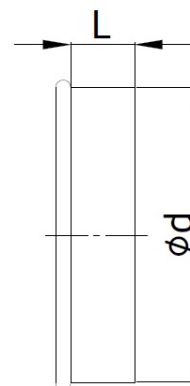
ILSNF-SMO female take-off with mesh, fire resistance class: E₆₀₀ 120 (h_o) S1500 single, designed for single-compartment smoke extraction systems and combined (dual-function) systems. Serves as an exhaust end piece. Welding points and other joints are covered with high-temperature sealant. SMOKE System fittings are available in diameters from 100 to 1000 mm.

Order example: ILSNF-SMO-200

Product code example

Product code: ILSNF-SMO - aaa

type _____
 Ød _____

Dimensions

$\text{Ø}d_{nom}$ [mm]	L [mm]	Weight [kg]
100	60	0.14
125	60	0.18
140	60	0.20
150	60	0.21
160	60	0.23
180	60	0.25
200	60	0.28
224	60	0.31
250	60	0.35
280	60	0.39
300	60	0.43
315	60	0.47
355	60	0.52
400	60	0.58
450	80	0.86
500	80	0.94
560	80	1.04
600	80	1.20
630	80	1.26
710	105	2.06
800	105	2.86
900	105	3.44
1000	120	4.01