

Flat segmented straight branch without gasket

ILS



Description

ILS flat segmented galvanized sheet straight branches without gaskets are used for fabrication of plenum boxes in air supply diffusers, and wall-mounted and ceiling air diffusers. The sizes 63, 75 and 90 mm are prefabricated for FLX plenum boxes installed with FLX-HDPE ducts in FLX-REKU air distribution systems concealed beneath suspended ceiling panels or raised floors. ILS branches can be expanded to match the joined diameter, and there are ILSF branches provided with factory-installed female ends. The branch can be fitted with a gasket; ILSL branches are provided with factory-installed EPDM gaskets on the branch.

Available materials — Product code example

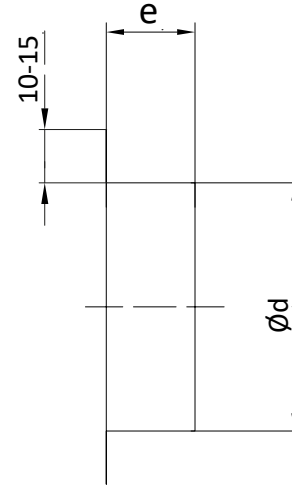
- ILS-... — galvanized steel sheet
- ILS-K... — 1.4301/304 stainless steel sheet
- ILS-K...- 316L — 1.4404/316L stainless steel sheet, molybdenum-enriched
- ILS-A-... — AW-1050A H24 aluminium sheet
- ILS-CU-... — M1E z4 copper sheet

Product code example

Product code: **ILS - aaa**

type _____
 Ød _____

Dimensions



Product code	Ød (mm)	e (mm)	Length L		
			40 (mm)	50 (mm)	80 (mm)
ILS-140	140	30-36	Yes	Yes	Yes
ILS-150	150	30-36	Yes	Yes	Yes
ILS-160	160	30-36	Yes	Yes	Yes
ILS-180	180	30-36	Yes	Yes	Yes
ILS-200	200	30-36	Yes	Yes	Yes
ILS-224	224	30-36	Yes	Yes	Yes
ILS-250	250	30-36	Yes	Yes	Yes
ILS-280	280	30-36	Yes	Yes	Yes
ILS-300	300	30-36	Yes	Yes	Yes
ILS-315	315	30-36	-	-	Yes
ILS-355	355	50-55	-	-	Yes
ILS-400	400	50-55	-	-	-
ILS-450	450	70-75	-	-	-
ILS-500	500	70-75	-	-	-
ILS-560	560	70-75	-	-	-
ILS-600	600	70-75	-	-	-
ILS-630	630	70-75	-	-	-
ILS-710	710	90-100	-	-	-
ILS-800	800	90-100	-	-	-
ILS-900	900	90-100	-	-	-
ILS-1000	1000	105-115	-	-	-
ILS-1120	1120	105-115	-	-	-
ILS-1250	1250	105-115	-	-	-

Tolerance: ±2 mm