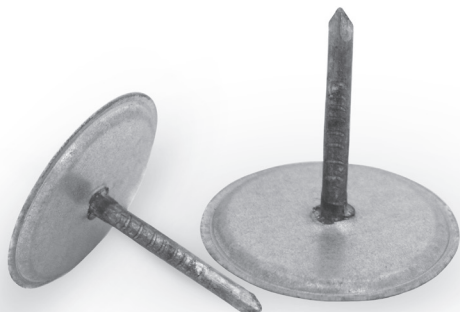


# Hot-weld pins for thermal insulation layers

## GWZ-PI



### Description

The GWZ-PI hot-weld pins are designed for fastening thermal insulation layers in plain ducts. The pins are fastened by welding the round foot to the plain duct with hand-held resistive pressure welders with sufficient power output. This provides durable fastening without any damage to the ductwork walls.

#### Available materials — Product code examples

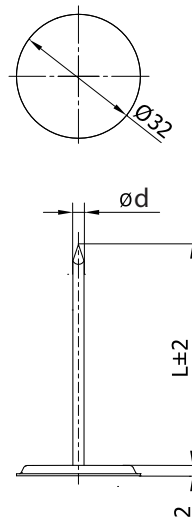
GWZ-PI-... — galvanized steel sheet

#### Product code example

Product code: **GWZ-PI-30**

type \_\_\_\_\_

### Dimensions



Product code	L (mm)	d (mm)
GWZ-PI-30	30	2.7
GWZ-PI-40	40	2.7
GWZ-PI-50	50	2.7
GWZ-PI-60	60	2.7
GWZ-PI-100	100	2.7