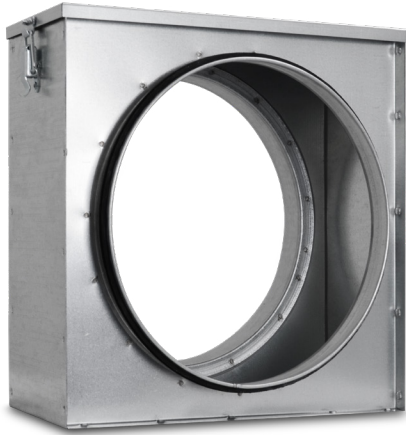


# Filter boxes

## FSBQL



### Description

The FSBQL duct filters are designed for filtering air flowing through round ducts in the standard diameter range of 100-500 mm.

The FSBQL duct filter casing is a galvanized steel sheet box with a top closure fastened with clasps. The box features connectors with EPDM gaskets. The dedicated design of the FSBQL duct filters allows easy replacement of the filter element. The FSBQL duct filters can be provided with class EU3 and EU5 filter elements. Optional filter elements include the FSBQ-I framed filter elements and the FSBQ-W pleated filter elements provided with a filter element mat protected with a galvanized steel wire mesh.

The FSBQL duct filters can be manufactured on request with the FSBQ-UC4 activated carbon filter elements.

#### Available materials — Product code examples

FSBQL-.. - galvanized steel sheet

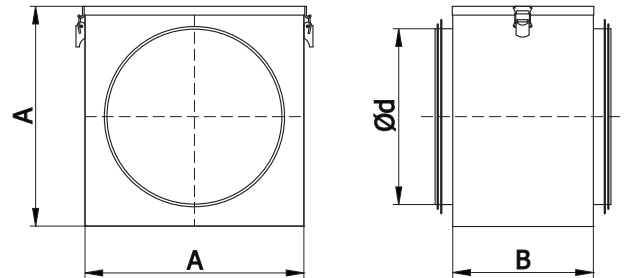
FSBQL-K-... - 1.4301/304 stainless steel

#### Product code example

Product code: **FSBQL - aaa**

type \_\_\_\_\_  
 Ød \_\_\_\_\_

### Dimensions



| Type      | Ød<br>[mm] | AxA<br>[mm] | B<br>[mm] |
|-----------|------------|-------------|-----------|
| FSBQL-100 | 100        | 160         | 150       |
| FSBQL-125 | 125        | 180         | 150       |
| FSBQL-150 | 150        | 210         | 150       |
| FSBQL-160 | 160        | 210         | 150       |
| FSBQL-200 | 200        | 250         | 150       |
| FSBQL-250 | 250        | 300         | 150       |
| FSBQL-315 | 315        | 360         | 150       |
| FSBQL-355 | 355        | 400         | 150       |
| FSBQL-400 | 400        | 450         | 150       |
| FSBQL-450 | 450        | 500         | 150       |
| FSBQL-500 | 500        | 550         | 150       |

# Filter boxes FSBQL

## Technical specifications

Pressure loss chart

