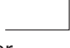




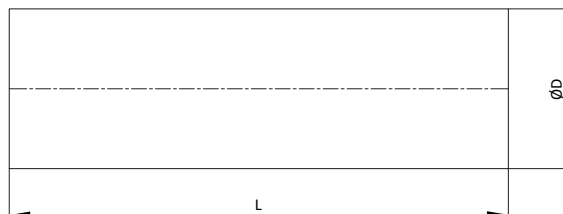
Extension piece for plenum boxes - FLX-Reku System

FLX-SRGL-320**Description**

FLX-SRGL-320 is an extension piece made of longitudinal seam welded plain pipe in 320mm length. The extension piece is applied for FLX-PLO, FLX-PRO, FLX-PLO-P and FLX-PRO-P plenum boxes and used as an extension of the spigot $\varnothing d_1$ for a supply/ exhaust air valve, e.g. equal to slab thickness.

Product code exampleProduct code **FLX-SRGL - 100 - 320**

type 
 air valve diameter 
 length 

Dimensions

| Product code | Diameter $\varnothing D$ [mm] | Length L [mm] |
|-------------------|----------------------------------|------------------|
| FLX-SRGL-080-0032 | 80 | 320 |
| FLX-SRGL-100-0032 | 100 | 320 |
| FLX-SRGL-125-0032 | 125 | 320 |
| FLX-SRGL-140-0032 | 140 | 320 |
| FLX-SRGL-150-0032 | 150 | 320 |
| FLX-SRGL-160-0032 | 160 | 320 |
| FLX-SRGL-180-0032 | 180 | 320 |
| FLX-SRGL-200-0032 | 200 | 320 |

How to install