

Horizontal distribution box for FLX-REKU system

FLX-PLO-R-P



Description

The FLX-PLO-R-P/FLX-PRO-R-P distribution boxes (manifolds) are used to run the domestic ventilation ductwork to each individual room. The air distribution box is equipped with a perforated panel, which is intended for even airflow distribution. As a rule, one air distribution box with a proper amount of FLX duct connection spigots is installed in the supply and exhaust air. However, the number of air distribution boxes depends on the building design. The $\varnothing d_1$ connection spigot is used to connect the main supply or exhaust duct from the heat recovery unit. FLX-HDPE / FLX-HDPE-A ducting is connected to $\varnothing d_2$ connection spigots.

FLX-PLO-R-P / FLX-PRO-R-P distribution boxes are made of galvanized steel sheet. Air distribution boxes made from stainless steel are available on request.

Available also insulated distribution box version - FLX-PLI-R-P / FLX-PRI-R-P. These distribution boxes have inside an insulation lining made from 9 mm thick rubber foam.

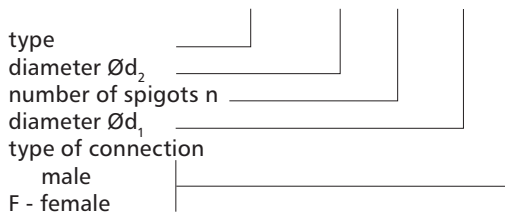
FLX-PLO-R-P distribution boxes are equipped with duct connection spigots $\varnothing d_2$ with a EPDM seal – this type of connection with FLX-HDPE ducting is airtight and easy to install.



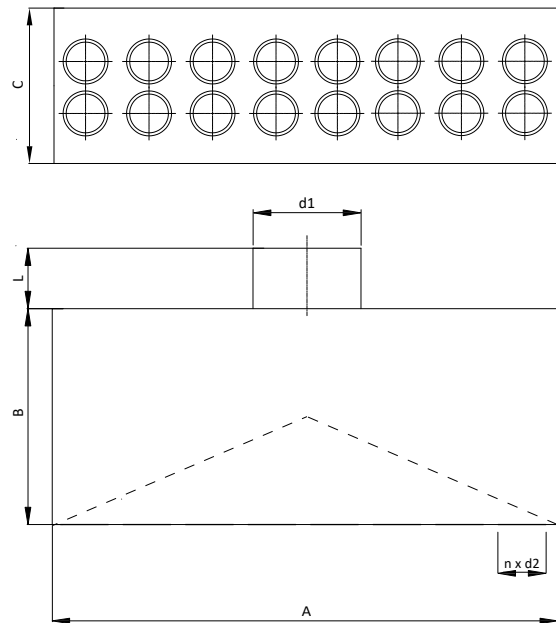
FLX-CF-PVC end caps fit duct connection spigots $\varnothing d_2$ of FLX-PLO-R-P and FLX-PRO-R-P distribution boxes.

Product code example

Product code **FLX-PRO-R-P - 75 - 2x10 - 200 -**



Dimensions



Product code	A [mm]	B [mm]	C [mm]	L [mm]	d_1 [mm]	n [pcs.]	d_2 [mm]
FLX-PRO-R-P-63-2x5-d1	500	180	230	60	80-250	10	63
FLX-PRO-R-P-63-2x6-d1	600	180	230	60	80-250	12	63
FLX-PRO-R-P-63-2x7-d1	700	180	230	60	80-250	14	63
FLX-PLO-R-P-75-2x5-d1	500	180	230	60	80-250	10	63
FLX-PLO-R-P-75-2x6-d1	600	180	230	60	80-250	12	63
FLX-PLO-R-P-75-2x7-d1	700	180	230	60	80-250	14	63
FLX-PLO-R-P-90-2x5-d1	500	180	230	60	80-250	10	75
FLX-PLO-R-P-90-2x6-d1	600	180	230	60	80-250	12	75
FLX-PLO-R-P-90-2x7-d1	700	180	230	60	80-250	14	75

Duct connection spigot d_1 : 80, 100, 125, 150, 160, 180, 200, 250 mm.

Choose distribution box according to number of spigots:

FLX-HDPE \varnothing [mm]	No of FLX duct connection spigots n [pcs.]	Product code of distribution box
63	10	FLX-PRO-R-P-63-2x5-d1
	12	FLX-PRO-R-P-63-2x6-d1
	14	FLX-PRO-R-P-63-2x7-d1
75	10	FLX-PLO-R-P-75-2x5-d1
	12	FLX-PLO-R-P-75-2x6-d1
	14	FLX-PLO-R-P-75-2x7-d1
90	10	FLX-PLO-R-P-90-2x5-d1
	12	FLX-PLO-R-P-90-2x6-d1
	14	FLX-PLO-R-P-90-2x7-d1

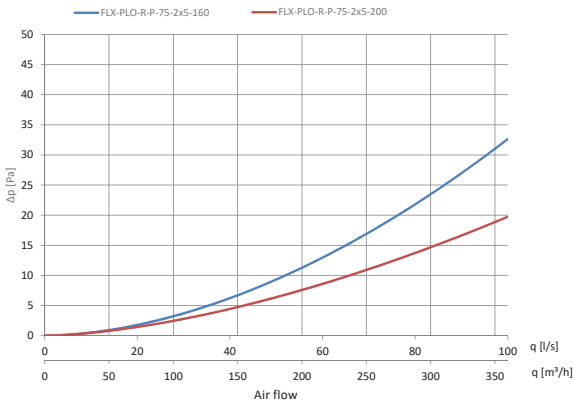
Horizontal distribution box for FLX-REKU system

FLX-PLO-R-P

Technical data

Pressure drop charts for supply air distribution boxes:

FLX-PLO-R-P-75-2x5-d1



Pressure drop charts for exhaust air distribution boxes:

FLX-PLO-R-P-75-2x5-d1

