

Horizontal distribution box for FLX-REKU system

FLX-PLO-R-P-50



Description

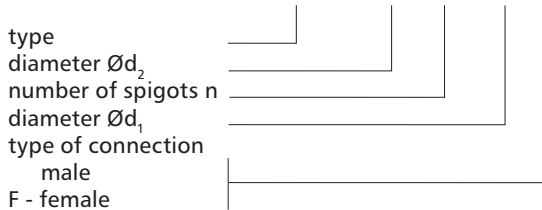
FLX-PLO-R-P-50 distribution boxes (manifolds) are used to run the domestic ventilation ductwork to each individual room. The air distribution box is equipped with a perforated panel, which is intended for even airflow distribution.

As a rule, one air distribution box with a proper amount of FLX-HDPE duct connection spigots is installed in the supply and exhaust air. However, the number of air distribution boxes depends on the building design. The $\varnothing d_1$ connection spigot is used to connect the main supply or exhaust duct from the heat recovery unit. FLX-HDPE / FLX-HDPE-A ducting is connected to $\varnothing d_2$ connection spigots.

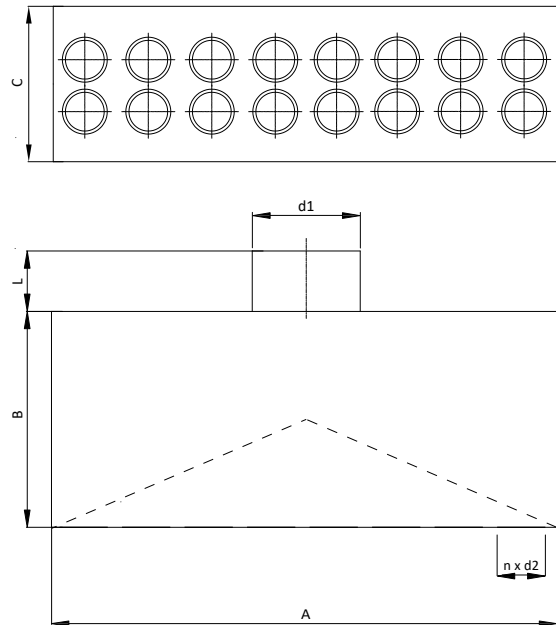
FLX-PLO-R-P-50 distribution boxes are made of galvanized steel sheet. Air distribution boxes made from stainless steel are available on request

Product code example

Product code **FLX-PLO-R-P - 50 - 2x8 - 200 -**



Dimensions



Product code	A [mm]	B [mm]	C [mm]	L [mm]	d_1 [mm]	n [pcs.]	d_2 [mm]
FLX-PRO-R-P-50-2x6-d1	600	180	230	60	80-250	12	50
FLX-PLO-R-P-50-2x8-d1	800	180	230	60	80-250	16	50
FLX-PLO-R-P-50-2x10-d1	1000	180	230	60	80-250	20	50
FLX-PLO-R-P-50-2x12-d1	1200	180	230	60	80-250	24	50

Duct connection spigot d_1 : 80, 100, 125, 150, 160, 180, 200, 250 mm.

Choose distribution box according to number of spigots:

FLX-HDPE \varnothing [mm]	No. of FLX duct connection spigots n [pcs.]	Product code of distribution box
50	12	FLX-PLO-R-P-50-2x6-d1
	16	FLX-PLO-R-P-50-2x8-d1
	20	FLX-PLO-R-P-50-2x10-d1
	24	FLX-PLO-R-P-50-2x12-d1