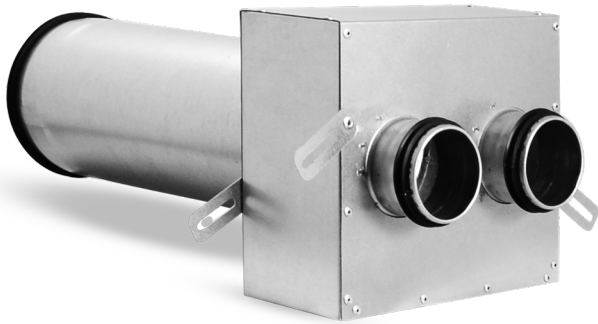


Horizontal plenum box for air valve

FLX-PLO-PL / FLX-PRO-PL



Description

FLX-PLO-P / FLX-PRO-P plenum boxes are components of the FLX-REKU system intended for domestic mechanical ventilation systems, also known as mechanical ventilation heat recovery (MVHR) or heat recovery ventilation. In this plenum box type, spigots $\varnothing d_1$ and $\varnothing d_2$ are aligned on single side.

The low profile plenum boxes require less installation space than standard solutions, which is very convenient when they should not be prominent once concealed. This advantage helps free up usable indoor area.

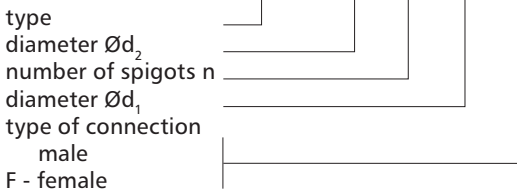
FLX-PLO-PL/FLX-PRO-PL plenum boxes are made of galvanized steel sheet. Plenum boxes made from stainless steel are available on request.

Available also insulated plenum box version - **FLX-PLI-PL/FLX-PRI-PL**. These plenum boxes have inside a insulation lining made from 9 mm thick rubber foam.

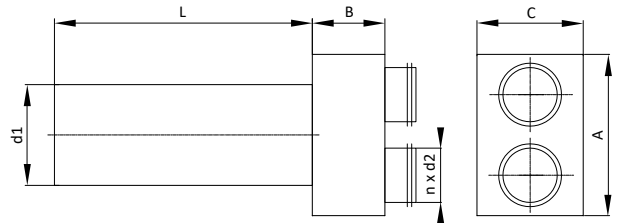
FLX-PLO-PL plenum boxes are equipped with duct connection spigot $\varnothing d_2$ with an EPDM seal – this type of connection with FLX-HDPE ducting is airtight and easy to install.

Product code example

Product code: **FLX-PLO-PL - 75 - 2 - 150 - F**

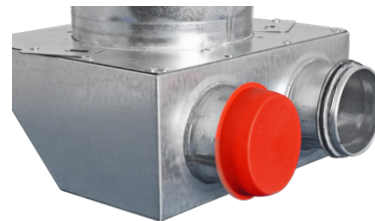


Dimensions



Product code	A [mm]	B [mm]	C [mm]	L [mm]	d_1 [mm]	n [pcs.]	d_2 [mm]
FLX-PRO-PL-63-2- d_1	180	90	200	320	80-160	2	63
FLX-PRO-PL-63-3- d_1	180	90	300	320	80-160	3	63
FLX-PLO-PL-75-2- d_1	220	90	220	320	125	2	63
FLX-PLO-PL-75-2- d_2	220	90	220	320	160	2	63
FLX-PLO-PL-75-2- d_1	250	90	250	320	200	2	63
FLX-PLO-PL-75-3- d_1	320	90	220	320	125	3	63
FLX-PLO-PL-75-3- d_2	320	90	220	320	160	3	63
FLX-PLO-PL-75-3- d_1	320	90	250	320	200	3	63
FLX-PLO-PL-90-2- d_1	250	90	250	320	125	2	75
FLX-PLO-PL-90-2- d_2	250	90	250	320	160	2	75
FLX-PLO-PL-90-2- d_1	250	90	250	320	200	2	75
FLX-PLO-PL-90-3- d_1	370	90	250	320	125	3	75
FLX-PLO-PL-90-3- d_2	370	90	250	320	160	3	75
FLX-PLO-PL-90-3- d_1	370	90	250	320	200	3	75

FLX-CS-PVC end caps fit connection spigots of FLX-PLO-75 and FLX-PLO-90 plenum boxes.



FLX-CF-PVC end caps fit (inside) duct connection spigots of FLX-PRO-63 plenum boxes.



Horizontal plenum box for air valve

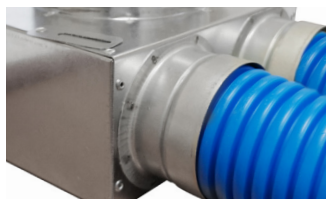
FLX-PLO-PL / FLX-PRO-PL

Types of plenum boxes

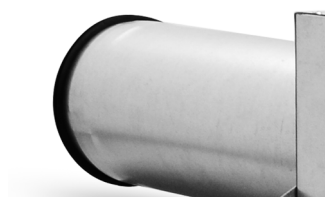
FLX-PLO plenum box



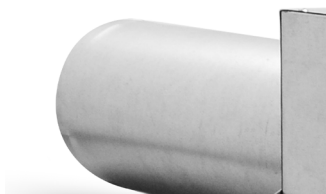
FLX-PRO plenum box (spigot - 63mm only)



FLX-PLO-75-2-160 male connection spigot $\varnothing d_1$ with a seal



FLX-PLO-75-2-160-F female connection spigot $\varnothing d_1$



On request, plenum boxes can be supplied with additional safety clips, that secure the semi-rigid duct in the place and protect it from disconnecting: FLX-PLO-75-...-H

