

Female couplings **FLX-MSF...**



Description

FLX-MSF female couplings are designed for joining sections of FLX-HDPE or FLX-HDPE-A ducting.

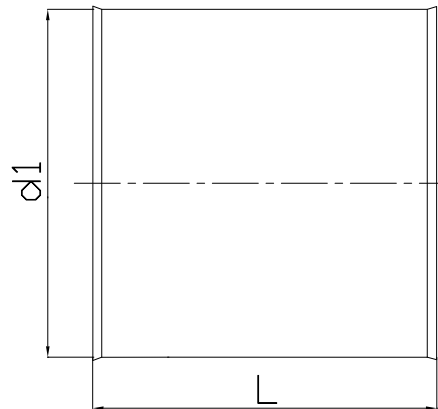
In order to achieve airtightness class C acc. EN 12237, it's recommended to use EPDM seals - FLX-USZ.

Product code example

Product code: **FLX-MSF - 75**

type _____
 $\varnothing d_1$ _____

Dimensions



Product code	d_1 [mm]	L [mm]
FLX-MSF-63	63	100
FLX-MSF-75	75	100
FLX-MSF-90	90	100