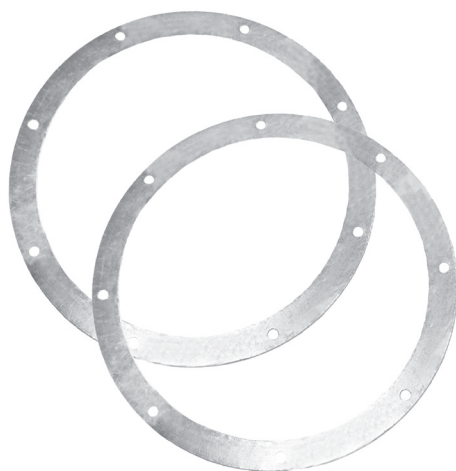


# Ductwork steel flanges

## FLS



### Description

FLS steel flanges are components for prefabrication of round duct parts made from galvanized steel sheet or stainless steel sheet. The flanges are bolted together with SRS steel screws, PDS-P washers and NKS nuts.

They are mainly used to manufacture roof air intake and exhaust bases in which the flanges stabilize the joints exposed to otherwise damaging wind loads. The FLS flanges can be used for butt-joining of round ducts and fittings. They provide excellent rigidity to ductwork exposed to deforming loads. The flanges are also used to fabricate connections for ductwork silencers directly attached to duct fans or roof fans with flanged joints.

#### Available materials — Product code examples

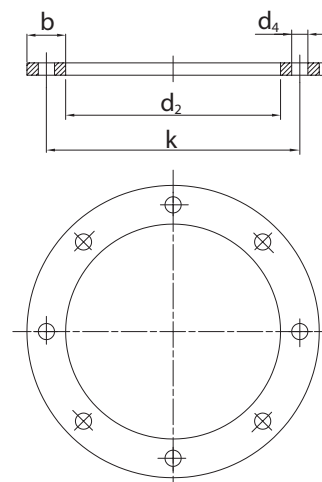
- FLS-... - galvanized steel sheet
- FLS-K-... - 1.4301/304 stainless steel sheet
- FLS-K-...-316L - 1.4404/316L stainless steel sheet, molybdenum-enriched
- FLS-A-... - AW-1050A H24 aluminium sheet

#### Product code example

Product code: **FLS - 160**

type \_\_\_\_\_  
 Ød \_\_\_\_\_

### Dimensions



$\varnothing d_{nom}$ (mm)	$\varnothing d_2$ (mm)	$b \times s$ (mm)	$\varnothing k \pm 0.5$ (mm)	$\varnothing d_4 \pm 0.5$ (mm)	Number of holes	Weight (kg)
80	82	25x3	112	9.5	4	0.18
100	102	25x3	132	9.5	4	0.21
112	114	25x3	144	9.5	4	0.24
125	127	25x3	157	9.5	4	0.26
140	142	25x4	172	9.5	6	0.41
150*	152	25x4	182	9.5	6	0.43
160	162	25x4	192	9.5	6	0.46
180	182	25x4	212	9.5	6	0.51
200	203	25x4	233	9.5	6	0.56
224	227	25x4	257	9.5	6	0.62
250	253	25x4	283	9.5	6	0.69
280	283	30x4	317	9.5	8	0.93
300*	303	30x4	337	9.5	8	0.97
315	318	30x4	352	9.5	8	1.03
355	358	30x4	392	9.5	8	1.15
400	404	30x4	438	9.5	8	1.28
450	454	30x4	488	9.5	8	1.43
500	504	30x4	538	9.5	8	1.58
560	564	35x4	600	9.5	12	2.07
630	634	35x4	670	9.5	12	2.31
710	714	35x4	750	9.5	12	2.58
800	804	35x4	840	9.5	16	2.90
900	904	35x4	940	9.5	16	3.24
1000	1005	35x4	1041	9.5	16	3.59
1120	1125	40x5	1169	9.5	24	5.74
1250	1255	40x5	1299	9.5	24	6.38

All sizes standardized to DIN 24154 Series 1.  
 \* Sizing as per EN 12220