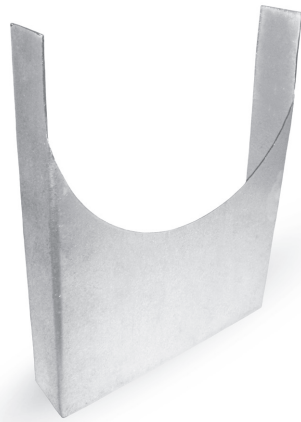


## Roof duct supports

# FAA/FAAL/FAAT

### FAA



### Description

The FAA... roof duct supports are designed for installation of round ventilation ducts on flat surfaces, e.g. on the roof. The standoff design enables free circulation of air around the ducts. The ducts are kept above the water drained from the roof surface, and in winter, snow can be easily removed from below the ducts. If the roof ductwork is exposed to strong winds, latched models are recommended to prevent the ducts from being pulled out of the support bands. All types of roof duct supports are mounted to the roof with two screws passing through the holes in the lower section of the base.

**Standard height:** 75 mm. Available on request: 120 mm.

**Mounting hole diameter:**

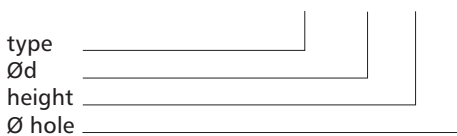
- Ø80-400 mm - Ø4 mm
- Ø450-800 mm - Ø8,5 mm.

**Available materials - Product code examples**

- FAA-... - galvanized steel sheet
- FAA-K-... - 1.4301/304 stainless steel sheet
- FAA-K-...- 316L - 1.4404/316L stainless steel sheet, molybdenum-containing
- FAA-A-... - AW-1050A H24 aluminium sheet
- FAA-CU-... - M1E z4 copper sheet

**Product code examples**

Product code: **FAA - 160 - 75 - 4**



### FAAT



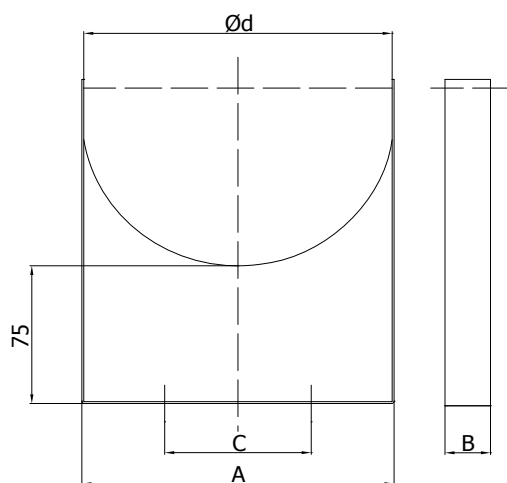
### FAAL



## Roof duct supports

# FAA/FAAL/FAAT

### Dimensions



Ød [mm]	A [mm]	B [mm]	C [mm]	number of holes
80	83	25	-	1
100	103	25	33	2
125	128	25	58	2
150	153	25	83	2
160	163	25	93	2
200	203	25	133	2
250	253	25	183	2
315	318	25	248	2
400	403	25	333	2
500	503	25	433	2
630	633	30	563	2