

Female coupling made of 43 mm EPP

EPP-43-MSF



Description

Female coupling made of expanded polypropylene (EPP) for connecting 43mm thick ducts. The coupling is used as additional piece, for example when connecting ducts which were cut. Such coupling is put on the outer diameter of a duct. The female couplings are produced in the following diameters: 125, 160 or 200 mm.

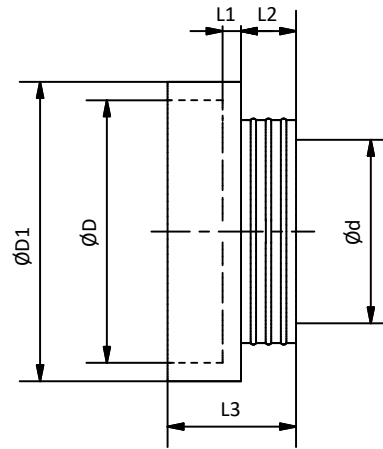
Thermal conductivity: 0.038 W / m*K
 Airtightness class: ATC2 (D) @ 110 Pa
 acc. to PN-EN 17192:2019-01

Available materials:
 EPP-43-MSF-....- EPP (expanded polypropylene)

Example of marking:
 Product code: **EPP-43-MSF - 200**

type _____
 diameter Ød _____

Dimensions



Code	Ød [mm]	ØD [mm]	ØD ₁ [mm]	L ₁ [mm]	L ₂ [mm]	L ₃ [mm]
EPP-43-MSF-125	125	211	251	20	60	140
EPP-43-MSF-160	160	246	286	20	60	140
EPP-43-MSF-200	200	286	326	20	60	140

Technical data

Technical data according to PN-EN 17192 43mm

Air tightness	ATC2 (D) ≤ 110 Pa ATC3 (C) ≤ 1000 Pa	
Service temperature	-25°C do +80°C	PN-EN 17192:2019
Reaction to fire	E	EN 13501-1
Resistance	No deformation at 3% deflection and 291 N load	
Thermal conductivity	λ = 0,038 W/(m·k)	PN-EN 12664:2002
Thermal resistance	U = 1,131 m²K/W	PN-EN 12664:2002
Microbial resistance	1a	Method A PN-EN ISO 846:2019

Assembly method

