

Airtight shutoff dampers with actuator mounting

DATML/DATM



Description

Dampers with actuator mounting are available in diameters of Ø80 to Ø630 mm, including intermediate sizes. The actuator mounting is designed to enable cladding with up to 50 mm thick insulation.

The standard version permits a lengthwise actuator orientation

For fast assembly of actuators, we recommend specially designed DA-SUP-S and DA-SUP-M mounting plates.

Actuators matching DA-SUP-S mounting plate	Actuators matching DA-SUP-M mounting plate
Alnor DM-LM-06	Alnor DM-LM-06
Belimo CM	Alnor DM-LM-08
Belimo LM	Belimo CM
	Belimo NM

As standard, DA-SUP stands are available in a lengthwise version, a crosswise version is available on request.

The standard version permits a lengthwise actuator orientation. The DATML/DATM dampers are a good choice when the ductwork closure must be airtight. The opening angle can be fixed with a mechanical limiter installed directly on the actuator. The damper closure can be deflected by up to 2 cm when the air pressure exceeds 2,000 Pa. For outdoor installations, the actuator must be protected from UV light and weather. All dampers can be provided with various types of actuators on request.

DATM - airtight shutoff damper with actuator mounting
DATML - airtight shutoff damper with gaskets at flanges and actuator mounting

Available materials — Product code examples

DATML-... - galvanized steel sheet
 DATM-K-...- 1.4301/304 stainless steel sheet
 DATML-K-...- 1.4301/304 stainless steel sheet

Product code example

Product code: **DATML - aaa - bbb**

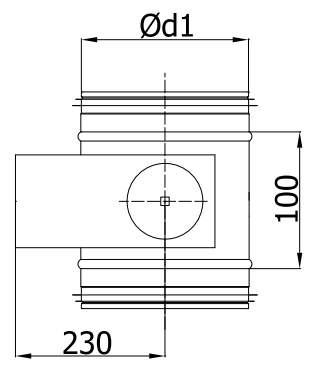
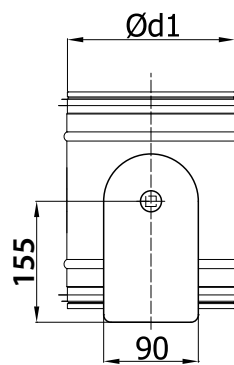
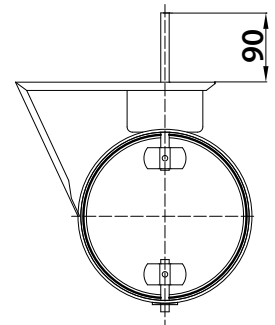
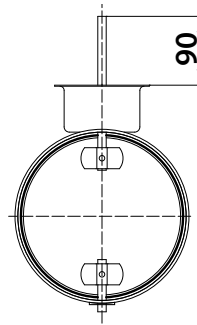
type

Ød₁

orientation of the actuator mounting



Dimensions

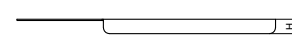
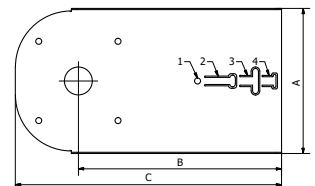
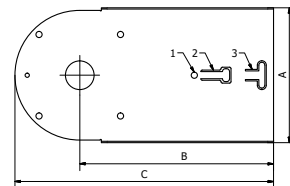


Standard: lengthwise actuator orientation

P — crosswise actuator orientation

DA-SUP-S mounting plate (up to diameter 315 mm inclusive)

DA-SUP-M mounting plate (above diameter 315 mm)



DA-SUP-S mounting plate		
A [mm]	B [mm]	C [mm]
94	135	182

DA-SUP-M mounting plate		
A [mm]	B [mm]	C [mm]
104	145	190

Ød _{1, nom} [mm]	Weight [kg]
80	0.6
100	0.7
125	0.8
160	0.9
200	1.2
224	1.35
250	1.5

Ød _{1, nom} [mm]	Weight [kg]
315	1.8
355	2.3
400	2.8
450	3.8
500	4.5
560	5.2
630	6.0