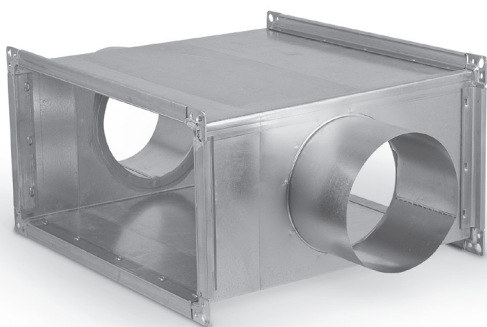
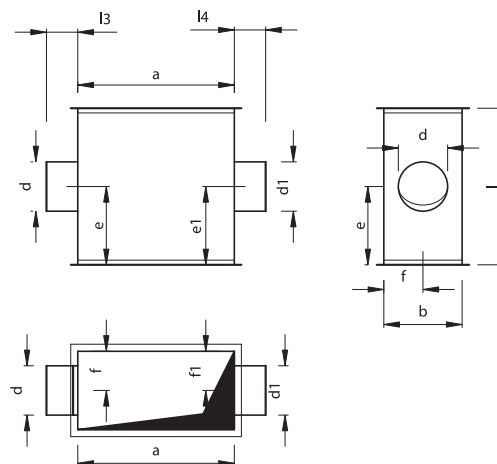


Four-way pieces with round take-offs

CZ2



Dimensions



Description

All four-way pieces with round take-offs are fitted with flange frames made of sheet angles and braced by cross-wise ribbing. The round take-off ports are coaxial in the standard version. The standard round take-off ports are male; the CZL2 version is available on request with male connectors fitted with gaskets.

Available materials — Product code examples

- CZ2-...-...-... — galvanized steel sheet
- CZ2-...-K-...-... — 1.4301/304 stainless steel sheet
- CZ2-...-K-...-...- 316L — 1.4404/316L stainless steel sheet
- CZ2-...-A-...-... — AW-1050A H24 aluminium sheet

Product code example

Product code: CZ2 - N - OCY - 500x300 - 400 - 160 - 50 - 80 - 100 - 150 - 100 - 80 - 100

type	_____	
N	_____	N — low-pressure version
S	_____	S — medium-pressure version
OCY	_____	OCY — galvanized steel
KWS	_____	KWS — stainless steel
ALU	_____	ALU — aluminium
a	_____	a — width
b	_____	b — height
l	_____	l — length
d	_____	d — take-off diameter
e	_____	e — take-off offset in length
f	_____	f — take-off offset in width
l ₃	_____	l ₃ — take-off height (default l ₃ = 100 mm)
d ₁	_____	d ₁ — take-off diameter
e ₁	_____	e ₁ — take-off offset in length
f ₁	_____	f ₁ — take-off offset in width
l ₄	_____	l ₄ — take-off height

If all dimensions of both take-off ports are identical, they are aligned according to the default sizing.