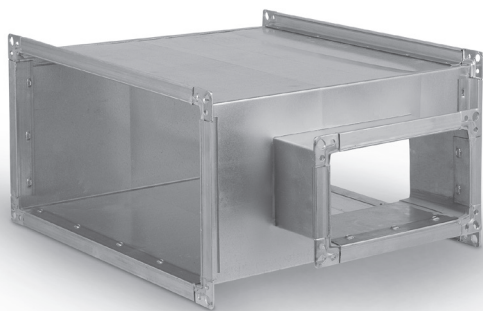


# Four-way pieces with square take-offs

## CZ1



### Description

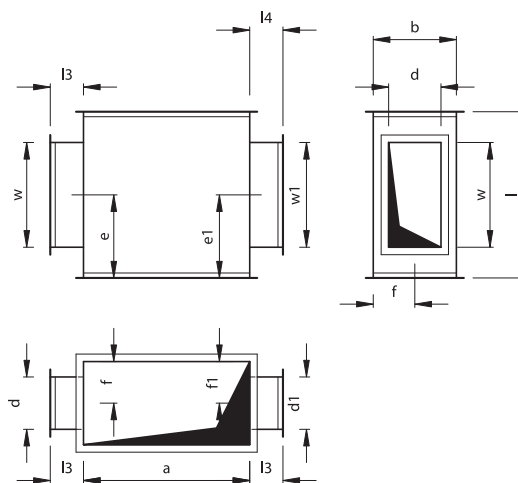
The four-way piece ends are fitted with sheet angles, and the entire fitting is braced by cross-wise ribbing.

This fitting allows building ductwork with branches taken off at 90 degrees.

#### Available materials — Product code examples

- CZ1-...-... — galvanized steel sheet
- CZ1-...-K-... — 1.4301/304 stainless steel sheet
- CZ1-...-K-... - 316L — 1.4404/316L stainless steel sheet
- CZ1-...-A-... — AW-1050A H24 aluminium sheet

### Dimensions



#### Product code example

Product code: CZ1-N-OCY-500x300-400-200x150-200-150-100-100-80-60-60-100

|                |       |  |
|----------------|-------|--|
| type           | _____ |  |
| N              | _____ | N — low-pressure version   |
| S              | _____ | S — medium-pressure version  |
| OCY            | _____ | OCY — galvanized steel   |
| KWS            | _____ | KWS — stainless steel  |
| ALU            | _____ | ALU — aluminium  |
| a              | _____ | a — width  |
| b              | _____ | b — height   |
| l              | _____ | l — length   |
| w              | _____ | w — take-off length  |
| d              | _____ | d — take-off width   |
| e              | _____ | e — take-off offset in length                                      |
| f              | _____ | f — take-off offset in width                                       |
| l <sub>3</sub> | _____ | l <sub>3</sub> — take-off height (default l <sub>3</sub> = 100 mm) |
| w <sub>1</sub> | _____ | w <sub>1</sub> — take-off length                                   |
| d <sub>1</sub> | _____ | d <sub>1</sub> — take-off width                                    |
| e <sub>1</sub> | _____ | e <sub>1</sub> — take-off offset in length                         |
| f <sub>1</sub> | _____ | f <sub>1</sub> — take-off offset in width                          |
| l <sub>4</sub> | _____ | l <sub>4</sub> — take-off height (default l <sub>4</sub> = 100 mm) |

If all dimensions of both take-off ports are identical, they are aligned according to the default sizing.