

# Suspension ring for EPP ducts

## CLRO-EPP



### Description

The CLRO-EPP suspension ring is designed for the EPP round ventilation ducts with a wall thickness of 15 or 43 mm. EPP ducts have a different outer diameter, resulting from the thickness of the material, therefore standard rings are not applicable. The CLRO-EPP has a clasp, resulting in a quick and easy assembly. Equipped with M8 rivet nut for fastening.

#### Available materials:

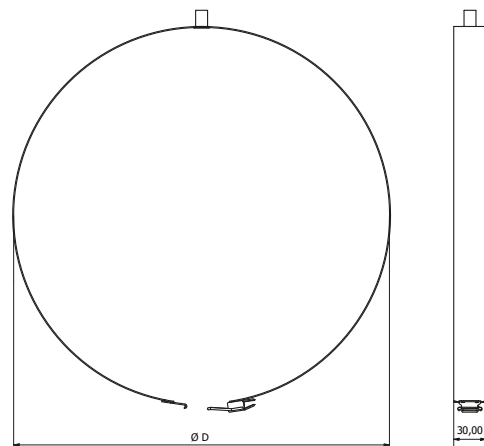
CLRU-EPP-...-... - galvanized steel sheet

#### Example of marking:

Product code: **CLRO-EPP - 43 - 125**

type \_\_\_\_\_  
 thickness \_\_\_\_\_  
 ØD \_\_\_\_\_

### Dimensions



Product code	ØD [mm]	ØD duct EPP (in/out) [mm]	Width [mm]	Montage
CLRO-EPP-15-125	155	125 / 155	30	M8
CLRO-EPP-15-160	190	160 / 190	30	M8
CLRO-EPP-15-200	230	200 / 230	30	M8
CLRO-EPP-43-125	211	125 / 211	30	M8
CLRO-EPP-43-160	246	160 / 246	30	M8
CLRO-EPP-43-200	286	200 / 286	30	M8

### Assembly method

