

# **User's Manual**

## **In-line Duct Fans**



### **Models**

**DV-PP-100-130**  
**DV-PP-100-270**  
**DV-PP-125-320**  
**DV-PP-150-560**  
**DV-PP-160-560**  
**DV-PP-200-910**

### Safety warnings

- Make sure that the power supply has been disconnected before performing the installation or electrical connection of the appliance.
- Installation, electrical connections and settings must be carried out by a qualified person in line with local regulations.
- If these installation instructions are not followed the product may be damaged.
- For optimal performance, the appliance must be installed correctly (installation of the unit, ducts and air replacement inlets).
- This extractor fan is designed for the ventilation of households or similar premises. Do not use for any purpose other than that for which it was designed.
- This appliance can be used by children aged from 8 years and above and persons with reduced physical, sensory or mental capabilities or lack of experience and knowledge if they have been given supervision or instruction concerning use of the appliance in a safe way and understand the hazards involved. Children shall not play with the appliance.
- Cleaning and user maintenance shall not be made by children without supervision.
- The fan is to be installed so that the blades are more than 2,3 m above the floor.
- This extractor fan does not produce radio/television interference (Directive 2004/108/EC).
- Prior to piping installation, consult the municipal by-laws on air outlets and request permission from the person responsible for the building.
- Precaution must be taken to avoid the backflow of gases into the room from the open gas pipe or from other open-flame devices.
- The room must have adequate ventilation if this appliance is used simultaneously with other appliances that run on gas or other fuels.
- Do not install the exhaust conduit (A, B) of the extractor fan to a chimney flume, ventilation pipes, hot air ducts or ducts used to evacuate fumes from appliances that run on gas or other fuels.
- DO NOT install this product in areas with the follow characteristics:
  - Excess of oil or grease.
  - Areas with corrosive, explosive or flammable liquids, gases or vapours.
  - Areas with temperatures higher than 60 °C or lower than -5 °C.
  - Areas exposed to the environment (rain, sun, snow, etc.)
  - Areas with possible obstacles that obstruct the access to the fan.
- The product and its parts must not be submerged in water or other liquids.
- The IP rating is only valid if the installation of the appliance complies with what is indicated in this manual.
- The manufacturer declines all responsibility for personal injury or damage to animals or objects caused by inappropriate use of the appliance according to the warnings for installation, use and maintenance described in this instruction manual.
- After finishing the installation these instructions should be given to the owner/user of the appliance.

### Assembly

- Before starting the installation, check that the propeller is not deformed or damaged, that it can turn freely, and that no foreign body is lodged inside the outer casing.
- This type of tubular extractor is designed to work within any section of the air exhaust duct (rigid or flexible) in either a horizontal or a vertical position.
- The appliance shall be installed according to the attached graphic documentation (see fig. 1 and 2)
  - Loosen the 2 screws (D) and lift the flanges (E). Take the casing assembly (F) out of its housing.
  - Place the bracket + openings (G) in the place where you want to install the extractor (wall or ceiling) and mark the holes (H).
  - Make four holes with a suitable drill bit and secure the bracket using the plugs and screws included with the appliance.
  - Is recommended that you place the appliance at a distance equal to or greater than one metre from the bend or the closest suction-expulsion opening.
  - Join the suction (A) and expulsion (B) conduits to the nozzles (I) by flanges or resistant adhesive tape
- It is important that the diameter of the tube should be equal to the diameter of the openings to ensure efficient operation of the appliance.
- • Replace the casing (F) in its housing in such a way that the air circulation direction indicated by the arrows (J) and the cable outlet direction are as desired.
- Close the flanges (E) and tighten the screws (D)
- Whether the assembly is done with an individual exhaust tube or with a direct outlet, air grilles must be installed that comply with national safety requirements for preventing access to the fan blades. Make sure that there is no obstacle blocking the flow of air.

# DV-PP

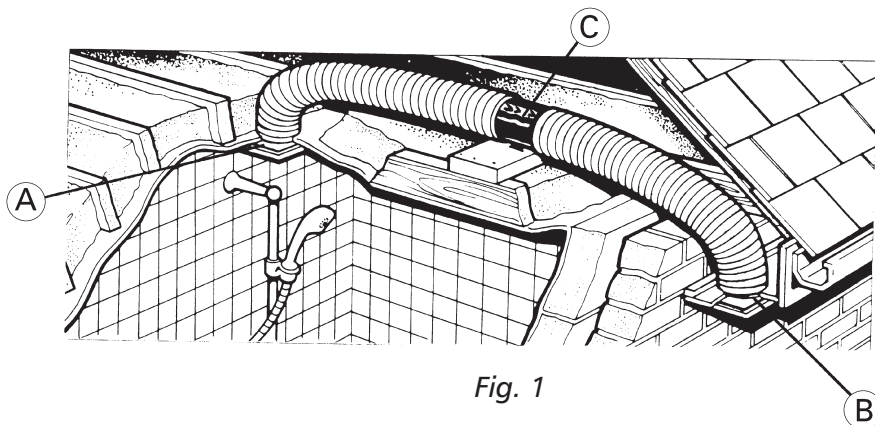


Fig. 1

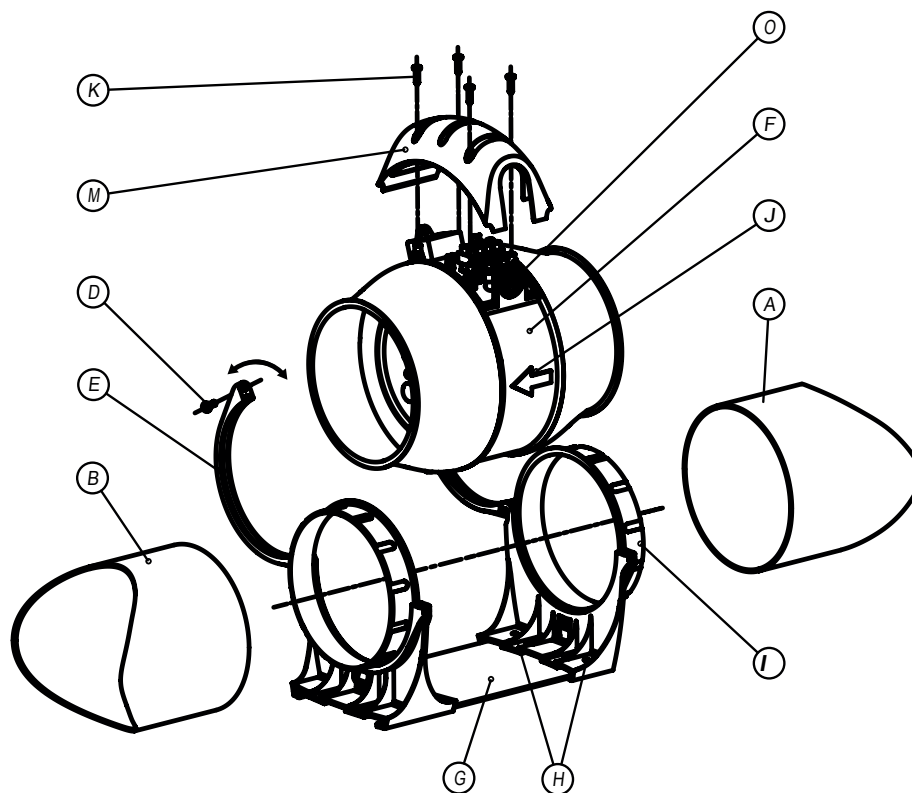
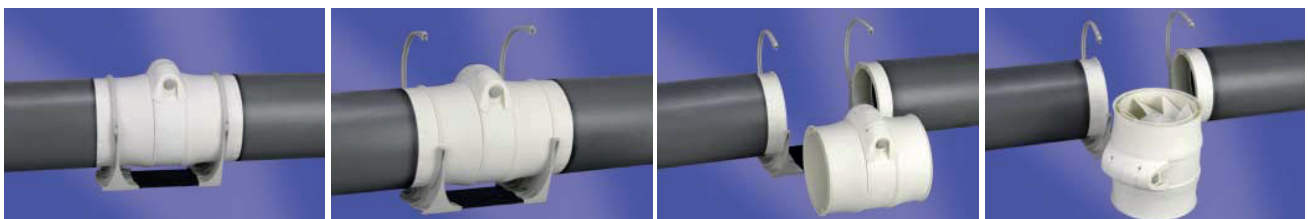


Fig. 2

## Assembly and diassembly sequence



## Manual - Duct fans

**DV-PP****Technical specification**

Fan:

- Housing of polypropylene plastic.
- Easy accessible motor due to the motor support, which can be dismantled without interfering existing duct system (Fig. 3)

Motor

- Asynchronous 1,2 and 3 speed motor, self-lubricating bearings for life
- Protection IP-44 insulation class B (not in DV-PP-100-130) and thermal cut out
- External terminal box
- 230V at 50 AND 60 Hz (not in DV-PP-100-130, just in 50 Hz),
- Speed control possible

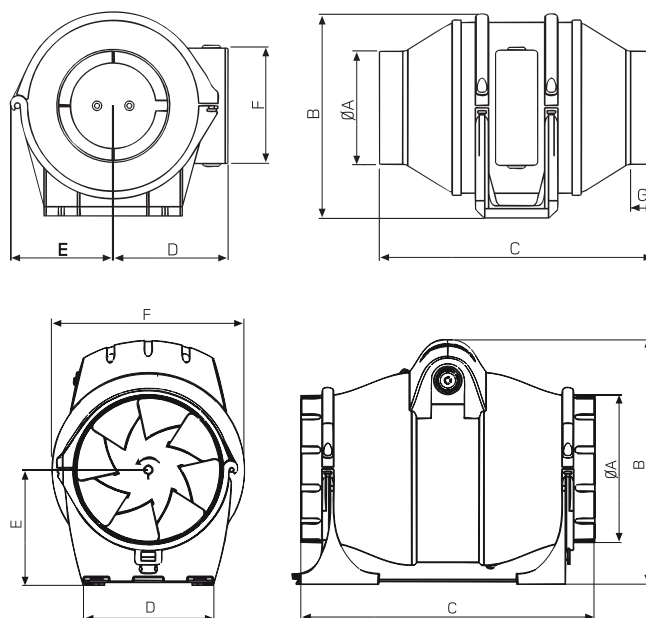
Impeller:

- DV-PP-100-130 with axial impeller, others are mixed flow impellers
- ABS plastic with high performance and very silence.



Fig. 3

Type	Air Flow [m <sup>3</sup> /h]	Input Power [W]	Current [A]	Speed [obr/min]	Voltage [V]	Noise level [dB]
DV-PP-100-130	130	25	0,16	2200	230	24
DV-PP-100-270	270/190	30/18	0,18/0,10	2300/1700	230	30/24
DV-PP-125-320	365/250	30/18	0,18/0,10	2300/1700	230	32/26
DV-PP-150-560	595/420	80/60	0,36//0,27	2700/2000	230	33/27
DV-PP-160-560	595/425	80/60	0,36/0,27	2700/2000	230	33/27
DV-PP-200-910	910/820/720	85/65/55	0,34/0,27/0,24	2700/2000/1800	230	39/34/32

**Dimensions**

Type	ØA [mm]	B [mm]	C [mm]	D [mm]	E [mm]	F [mm]	G [mm]
DV-PP-100-130	98	177	238	100	89	100	20
DV-PP-100-270	98	230	310	130	115	170	20
DV-PP-125-320	122	217	262	100	100	168	21
DV-PP-150-560	147	244	293	130	115	192	21
DV-PP-160-560	157	244	313	130	115	192	21
DV-PP-200-910	197	278	354	142	140	230	52

## Manual - Duct fans

# DV-PP

## Electrical connection

- Make sure that the voltage (V) and frequency (Hz) of the power supply correspond to the values indicated on the name-plate.
- The appliance must be able to be disconnected from the mains electricity supply after installation.
- It can be disconnected by making the plug accessible or by incorporating a switch in the fixed wiring that meets electrical installation standards.
- The appliance must be permanently connected with wiring for fixed installation.
- (2- or 3-core cable with a minimum cross-section of 1 mm<sup>2</sup> and maximum of 1.5 mm<sup>2</sup>).
- To complete the electrical connection, follow the wiring diagram (see fig. 4A, 4B, 4C).
- No earthing connection is required, given that this is a doubly-insulated appliance (Class II).
- Remove the connection cover as shown in fig. 2.
- Perforate the flex holder (O) to allow the power supply wires to pass through.
- The power supply cable must be placed so that no liquid or vapour can enter the appliance along it. If this were not possible, the cable entry should be sealed additionally, e.g. with silicone. Otherwise, the indicated IP rating would not be maintained.
- This appliance has a one, two or three-speed motor (depending on the model)
- If you wish to install a commutator that lets you choose between high speed (S3), medium speed (S2) (only in the DV-PP-200-910 model) and slow speed (S1), see fig. 4A - 4B.
- In the event that this appliance is not used, it is recommended that you disconnect it from the mains electricity supply.

DV-PP-100-270  
DV-PP-125-320  
DV-PP-150-560  
DV-PP-160-560

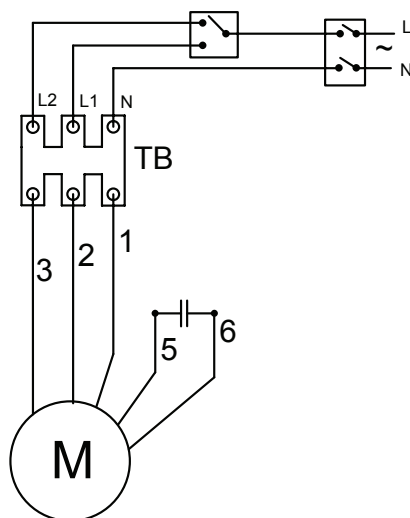


Fig. 4A

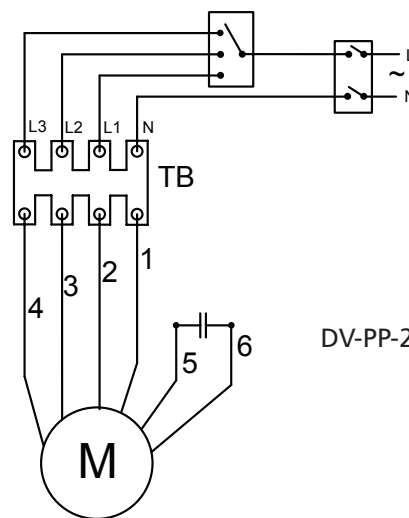


Fig. 4B

DV-PP-100-130

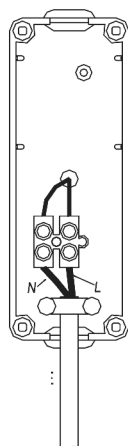
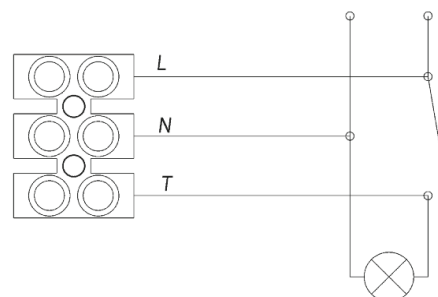


Fig. 4C



#	Symbol	Color
1	N	Blue
2	L	Brown
3	T	Black

## Manual - Duct fans

# DV-PP

### Cleaning and maintenance

- Before cleaning make sure that the appliance is not connected to the electric network
- and prevent it from being reconnected by accident.
- Clean with a damp cloth regularly.
- For maintenance operations
- The casing assembly must be removed from its position (see fig. 2)
- Remove the two reducer pipes (V): Loosen the screws on the reducer pipes, turn each reducer pipe about 9° in an anti-clockwise direction and remove the pipe by pulling it (see fig. 6).
- The motor, propeller and all components should be inspected periodically to ensure that they are not dirty and have not suffered any damage. The frequency of inspections depends on the appliance's operating conditions.
- Remove the dirt on the propeller and the inner parts of the casing to avoid imbalances during operation, a decrease in aerodynamic performance and motor damage.
- Motor bearings do not need maintenance.
- Once maintenance is complete, refit the reducer pipes and casing assembly.
- Always demand original spare parts for repairs.

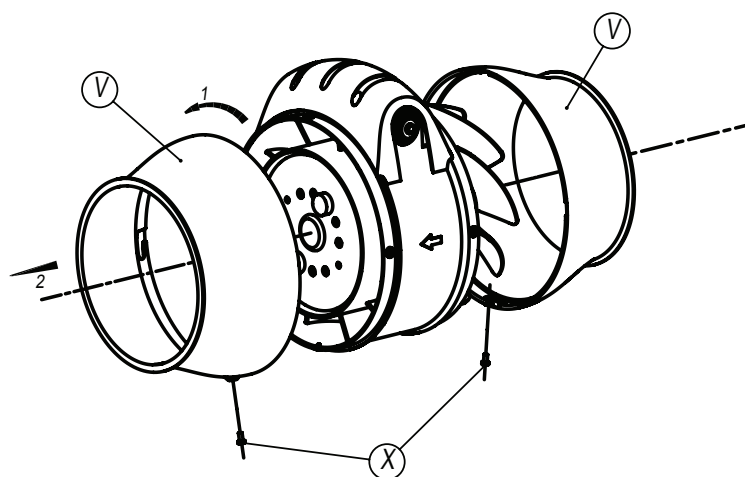


Fig. 6

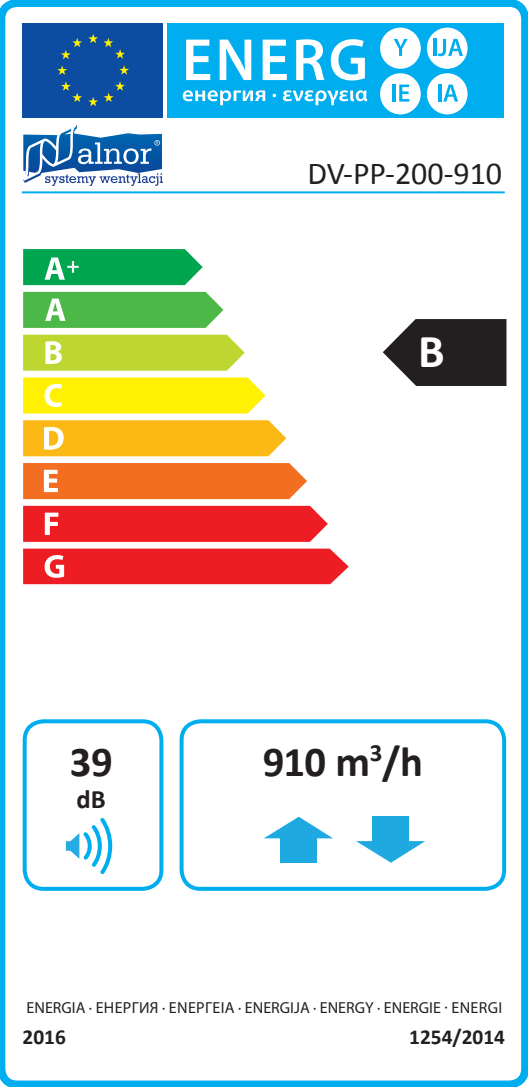
### Disposal and recycling



The symbol shown on the left presented on the product or on its packaging indicates that this product may not be treated as household waste. Instead it shall be handed over to the applicable collection point for the recycling of electrical and electronic equipment. By ensuring this product is disposed of correctly, you will help prevent potential negative consequences for the environment and human health, which could otherwise be caused by inappropriate waste handling of this product. For more detailed information about recycling of this product, please contact your local city office, your household waste disposal service or the shop where you purchased the product.

# DV-PP

## Energy classes



Type	Noise level [dB]	Airflow [m³/h]	Energy class
DV-PP-100-130	24	130	C
DV-PP-100-270	30	270	B
DV-PP-125-230	32	365	B
DV-PP-150-560	33	595	C
DV-PP-160-560	33	595	C
DV-PP-200-910	39	910	B